

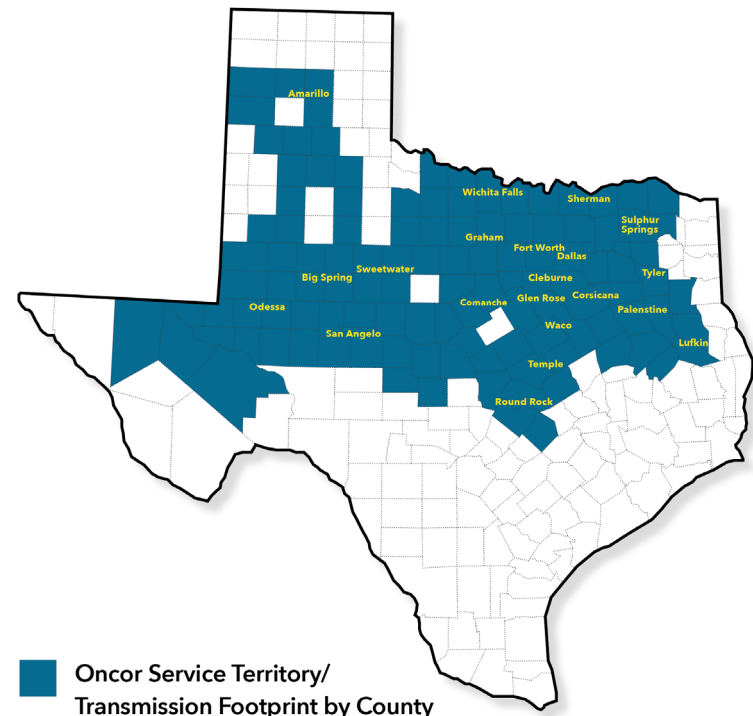


ONCOR & ENERGY EFFICIENCY\_THE BASICS

# Who Is Oncor?

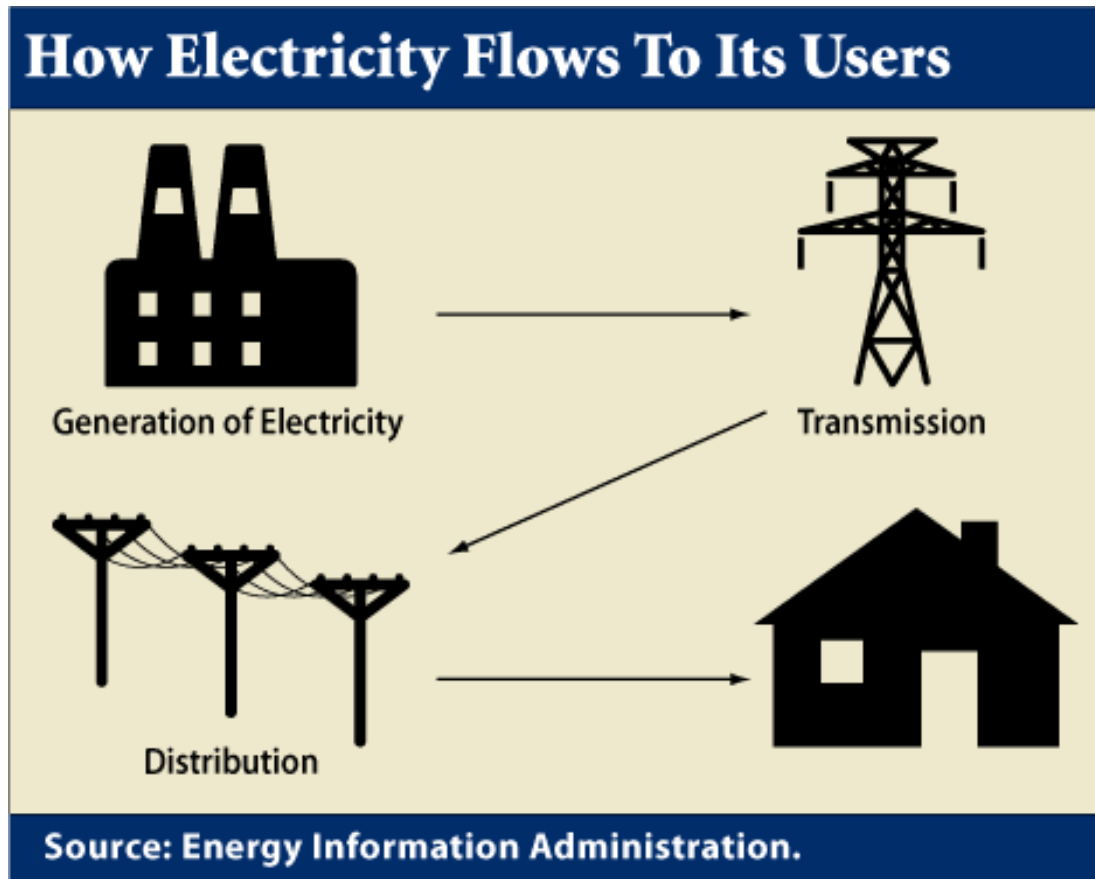


- Oncor (together with its subsidiaries) operates the most extensive distribution and transmission system in Texas
- Oncor's service area includes more than 400 communities in 98 counties that span nearly one-third of the state and encompass west, central, and east Texas. Our service territory is diverse and growing—just like Texas business.
- Operates in the U.S.'s highest-growth region in electric demand, according to the North American Electric Reliability Council (NERC)



# Deregulation in Texas & Oncor

Generators



Oncor

Retail  
Electric  
Providers

# Energy Efficiency Organization



# What Is Energy Efficiency?



## Energy Conservation

- Energy conservation is any behavior that results in less energy use.  
*Example: Turning lights off to save energy.*

## Energy Efficiency

- Energy efficiency is using technology that requires less energy to perform the same function.

*Example: Installing efficient lighting, such as LEDs, to save energy.*

## Why Energy Efficiency?

- Energy efficiency is deemed the most cost-effective “source” of energy.
- The cost of saving a kW or kWh is less than the cost of producing a kW or kWh (“cost-effectiveness”)
- In past years, the electricity generation capacity during peak times has not always met the demand.
- Energy efficiency programs help create demand and supply of new technologies to encourage “early” adoption.
- Energy efficiency programs spur changes in new building codes as technologies become more readily available and affordable.

## Demand and Energy Savings...Where do they come from?

To achieve the energy and demand goals, Oncor offers Energy Efficiency Programs.

- Choose the program that fits your needs
- Select a service provider ([takealoadofftexas.com](http://takealoadofftexas.com))
- Service provider installs approved equipment
- Oncor calculates the savings & verifies the work
- Service provider receives an incentive!



## How Does Oncor Pay for Energy Efficiency Programs?

Programs are paid for using rate-payer funds collected by an Energy Efficiency Cost Recovery Factor (EECRF).





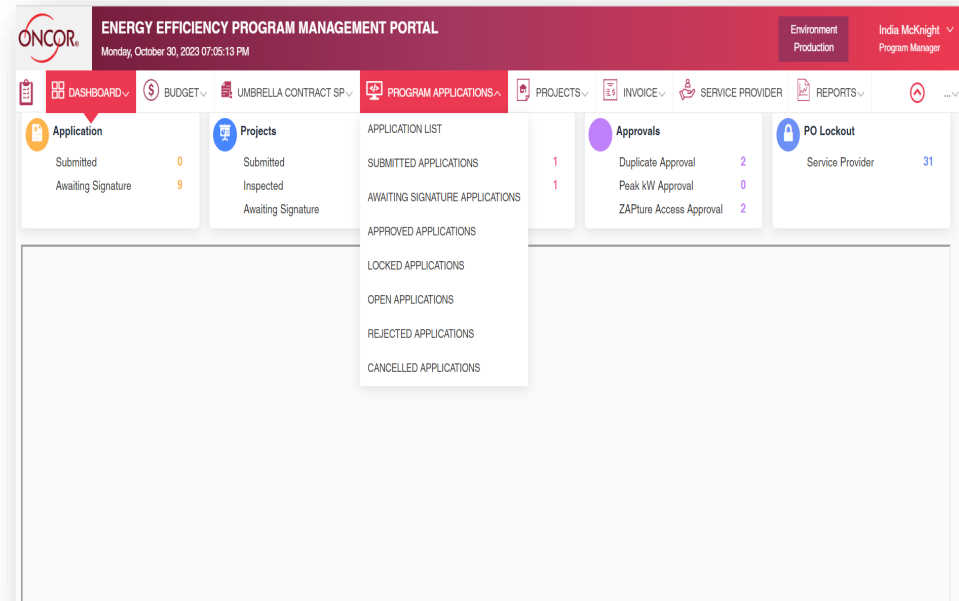
Two curved lines, one red and one dark red, arching across the top of the slide.

# SERVICE PROVIDER & PARTICIPATION

# Energy Efficiency Project Management Portal (EEPM)

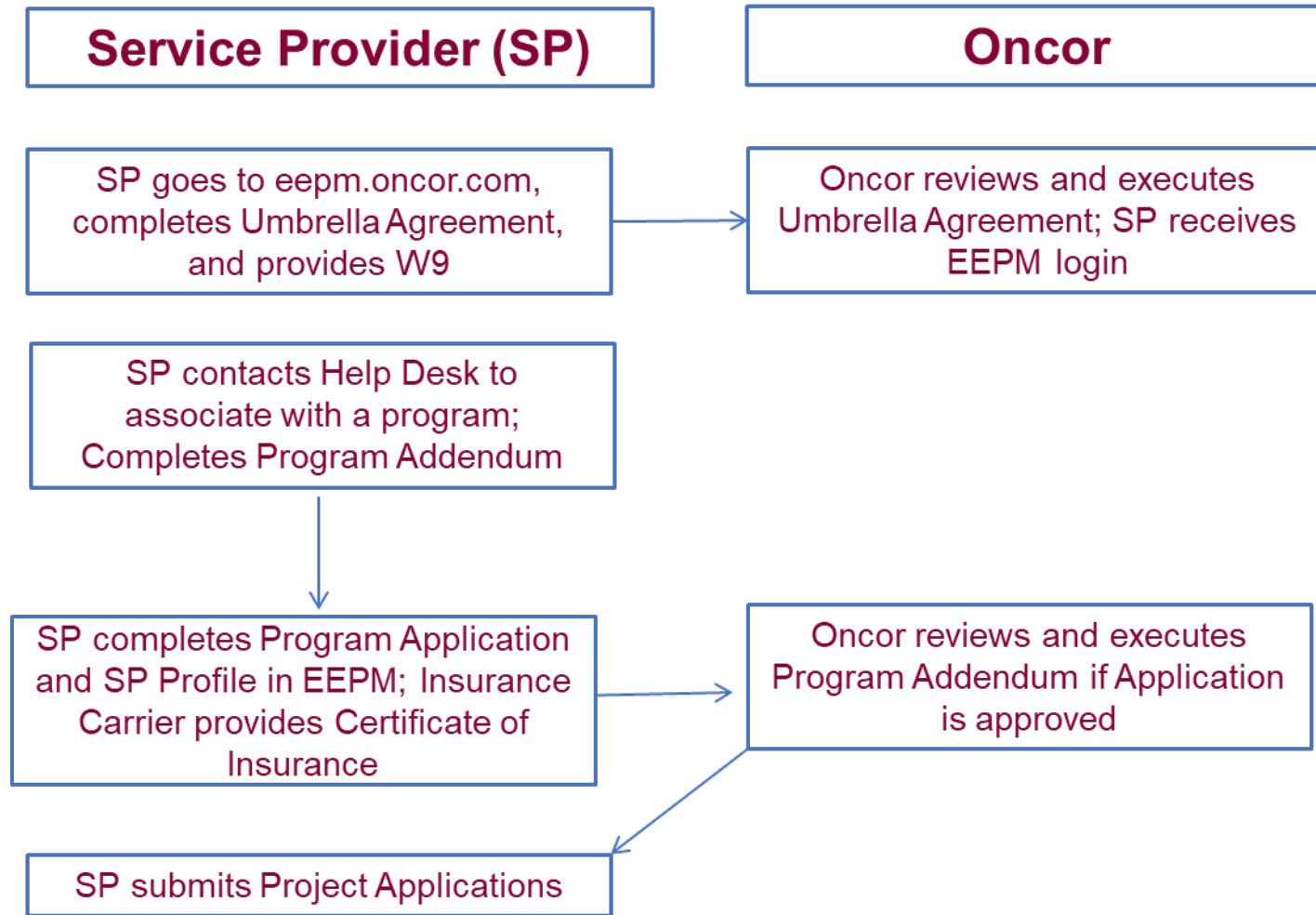
EEPM is Oncor's Web-based project management system. It allows users to:

- ❑ Manage their profile with Oncor
- ❑ Submit projects for incentives
- ❑ Check the status of projects
- ❑ Calculate incentives and savings
- ❑ Find additional resources such as program manuals, savings calculations (deemed savings), and other program materials



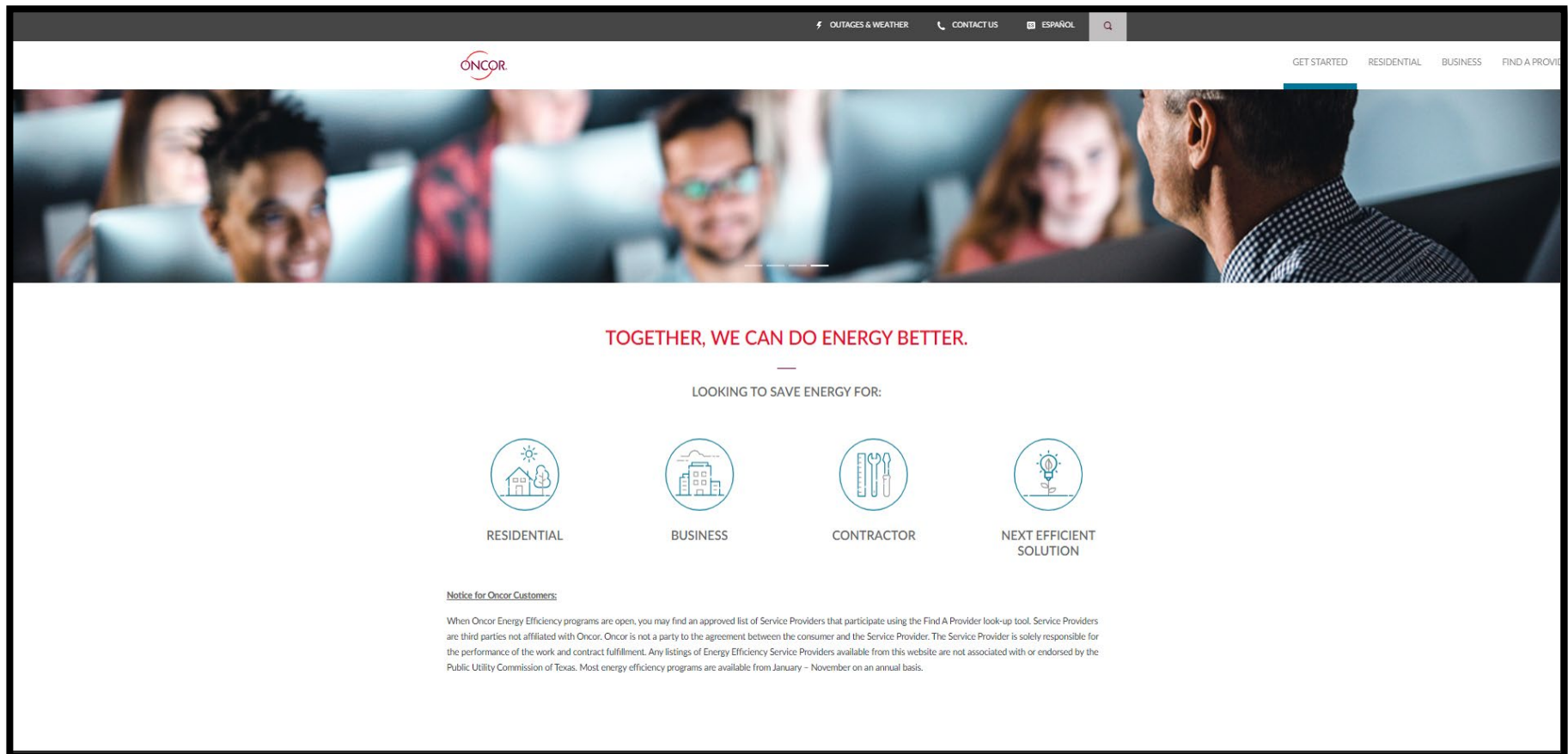
Visit [eepm.oncor.com](http://eepm.oncor.com) and complete an Umbrella Agreement.

# How to Enroll as a Service Provider



Visit [eepm.oncor.com](http://eepm.oncor.com) for more information.

# Customer Participation



Two thick, curved lines in red and dark red sweep across the top of the page, starting from the left edge and curving downwards towards the right.

# GLOSSARY OF TERMS

# Glossary of Terms – Calculating Savings



- **Measurement and Verification (M&V):** Verifying and measuring the energy and demand savings from an energy efficiency project. This can include metering or logging of data and engineering calculations.
- **Deemed Savings:** An energy or demand savings estimate for a measure developed from actual data and analytical methods to create stipulated values. Deemed savings may be used in specific applications instead of measurement and verification activities.
- **E-Files:** A set of Excel-based spreadsheets incorporating deemed savings information to calculate energy and demand savings based on specific input criteria.



# Glossary of Terms – Forms and Tools

**Fixture Codes:** A code provided to denote a specific lighting fixture in the E1 Lighting File.

**Program Manuals:** Document that incorporates all the program rules, processes, incentives, budgets, and program contact information.

## **Phases of Participation:**

- Initial Application (IA): Blocks incentive funds for a project for a specified period.
- Final Application (FA): Provides accurate project information to generate a formal Reservation of Funds Agreement.
- Installation Notice (IN): Period for construction and notification to Oncor of completion.
- Savings Report (SR): Generation of the project savings and incentives.

# Glossary of Terms – Forms and Tools



**Estimated Useful Life (EUL):** The estimated time (typically in years) that a measure continues in operation.

**Cost-Effectiveness:** The value of the savings generated by a program or measure versus the cost.

**Evaluation or EM&V:** The process of an outside third party (hired by the PUCT) conducting verification activities on utility-administered programs.

**Opt-Out:** A customer or customer class that has elected not to contribute to the Energy Efficiency Cost Recovery Fund. These Customers are NOT eligible for participation.





# ENERGY EFFICIENCY PROGRAMS

# Energy Efficiency Program Portfolio



## Commercial Programs

- Commercial Custom Option
- Commercial Solar
- Commercial Load Management Program
- Small Business Program
- Strategic Energy Management

## Residential Programs

- Home Energy Efficiency  
HVAC
- Low-Income Weatherization  
HVAC & A/C Tune-up
- Residential Solar
- Residential Load Management
- Retail Products Program

# Commercial Energy Efficiency Programs



## Types of Projects:

Oncor's Commercial Energy Efficiency Programs incentivize upgrading equipment and processes to increase a facility's energy efficiency. Commercial facilities have the opportunity to select from two participation pathways.

### Commercial Standard Offer Program

- Incentives available for new or existing facilities.
- Project savings determined using deemed savings.

### Commercial Custom Option

- Projects with measurement and verification requirements.



Lighting



Motors



Chillers

# Residential Energy Efficiency Programs

The Home Energy Efficiency Program and Low Income Weatherization Program offer incentives to approved participating service providers who install qualifying energy-saving products for eligible Oncor residential customers.

To participate:

- ☐ Homes must have Oncor as their electric delivery provider
- ☐ Homeowners and renters (who have permission from the owner) may participate
- ☐ Contact an approved service provider



# Residential Energy Efficiency Programs



## Types of Projects:

### Home Energy Efficiency (HEE)

- The HEE Program incentivizes approved participating service providers who implement energy-saving projects, such as insulation and HVAC upgrades.
- Incentives are designed to help lower the overall cost to the customer for energy efficiency improvement.

### Low-Income Weatherization (LIW)

- The LIW Program offers incentives to approved participating service providers who implement qualifying energy-saving projects for residential customers with income levels at or below 200 percent above the federal poverty guidelines.



# Solar Programs

Financial incentives are offered to Service Providers for the installation of eligible distributed solar energy photovoltaic generating equipment.

- Available to Oncor's residential and commercial customers (incentives paid to Service Providers)
- Incentive amount is based on each meter location and installed equipment
- Approved Service Providers calculate each project's estimated incentive amount



Two thick, curved lines in red and dark blue sweep across the upper portion of the slide, starting from the left edge and curving towards the right.

# CONTACT INFORMATION



# Commercial Team Contact Information



Kim Hoope

[Kim.hooper@oncor.com](mailto:Kim.hooper@oncor.com)

214-486-3158

EEPM Help Desk

[eepmsupport@oncor.com](mailto:eepmsupport@oncor.com)

866-258-1874

Matt Taylor

[Matt.Taylor@oncor.com](mailto:Matt.Taylor@oncor.com)

214-486-5488

Insurance Coordinator

[eepminsurance@oncor.com](mailto:eepminsurance@oncor.com)

866-258-1874

Ron Haskovec

[Ron.Haskovec@oncor.com](mailto:Ron.Haskovec@oncor.com)

214-486-5160





# Residential Team Contact Information

Tallulah Matthews (Home Energy Efficiency)

[Tallulah.Matthews@oncor.com](mailto:Tallulah.Matthews@oncor.com)

(214) 486-3284 office

EEPM Help Desk

[EEPMsupport@oncor.com](mailto:EEPMsupport@oncor.com)

(866) 258-1874

Joanna Gomez (Low-Income Weatherization)

[Joanna.Gomez@oncor.com](mailto:Joanna.Gomez@oncor.com)

(214) 486-4153 office

Insurance

[eepminsurance@oncor.com](mailto:eepminsurance@oncor.com)

Chris Cook (Solar)

[christopher.cook@Oncor.com](mailto:christopher.cook@Oncor.com)

214-486-5562 office

Terry Manning (Inspections)

[tmanning@oncor.com](mailto:tmanning@oncor.com)

(214) 486-4624 office



CONTACT US

# THANK YOU!

ONCOR AND ENERGY EFFICIENCY – THE BASICS

