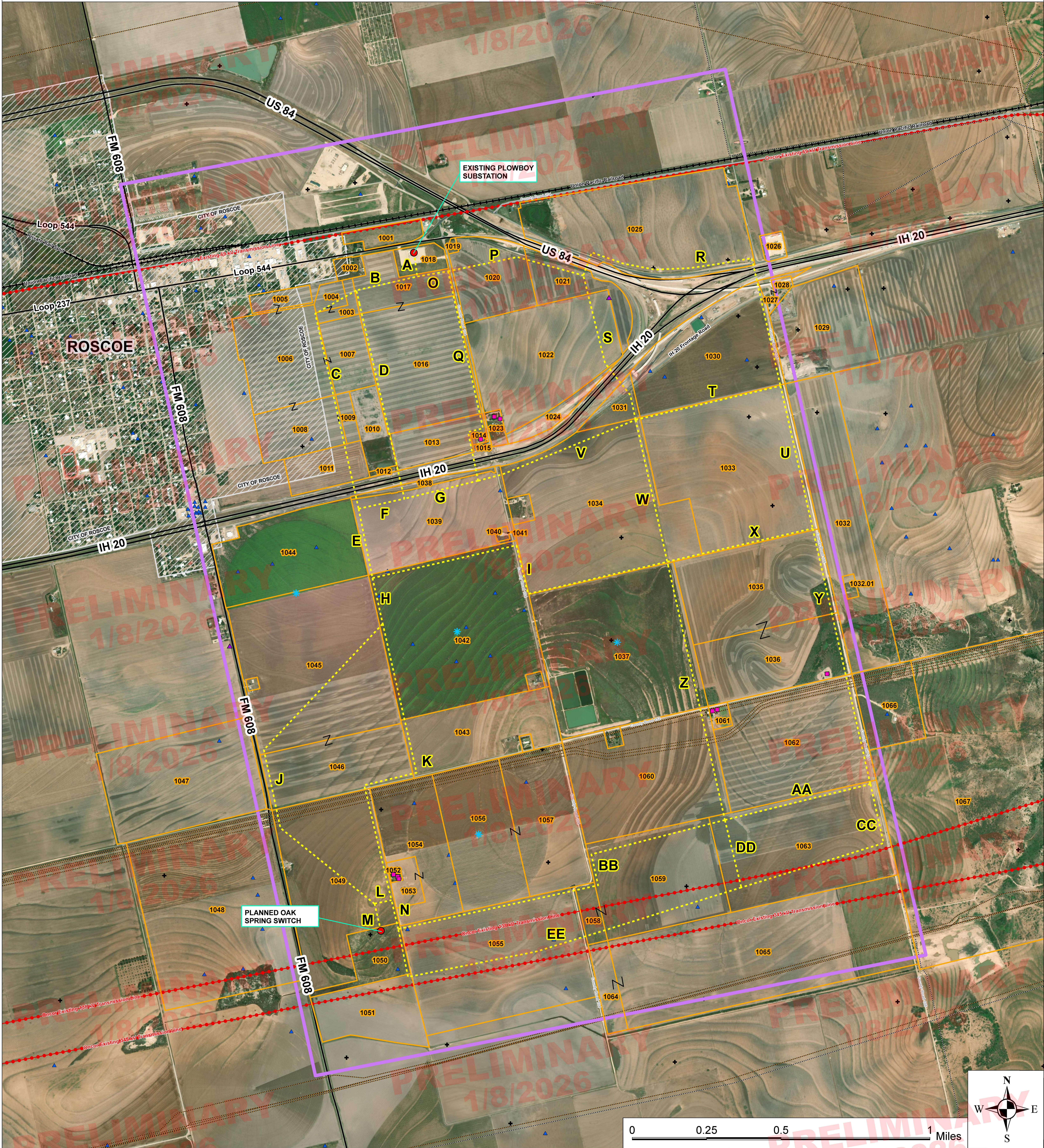




# ENVIRONMENTAL AND LAND USE CONSTRAINTS MAP

## FLOWBOY SUBSTATION - OAK SPRING SWITCH 138 kV TRANSMISSION LINE PROJECT

### IN NOLAN COUNTY, TEXAS



- Legend**
- Water Well
  - Oil or Natural Gas Well
  - Habitable Structure (within 300 feet of route)
  - Electronic Installation
  - Park/Recreation Area\*
  - Historical Marker\*
  - Airport/Airstrip/Helipad\*
  - Cemetery\*
  - Center Pivot Irrigation
  - Project End Points
  - Preliminary Alternative Route Links
  - Existing Transmission Lines
  - Oil or Natural Gas Pipeline (<8-inch diameter)
  - Oil or Natural Gas Pipeline (>8-inch diameter)
  - Major Roads
  - Minor Public Roads
  - Railroads
  - Named Rivers and Streams
  - Unnamed Tributaries
  - Waterbody/Open Water
  - Study Area
  - Tract Boundary and Number
  - Land Hook
  - Incorporated City Limits

- Notes:**
- Some legend symbols are enlarged for easier identification.
  - Aerial photography is from the most recent USDA NAD imagery (USDA, 2024).
  - Sensitive cultural resource data are not shown on this map as these data are not to be reproduced, distributed, or released to the public.
  - Data are for display purposes only. All features and boundaries have been approximated based on information gathered from review of public resources and field reconnaissance.
  - This map contains tax office and appraisal district data. Property lines shown are approximate and not verified by field survey data. Property data prepared by Half Associates with route location furnished by Freese and Nichols.
  - Legend items indicated by an asterisk (\*) represent features that were researched, verified, and recorded but are otherwise beyond the map extents and cannot be located on the map.
  - Due to potential horizontal inaccuracies of the aerial photography and data utilized, all habitable structures within 320 feet have been identified.
- Date Printed: December 23, 2025

#### Extent Map



#### Vicinity Map

