

Legend

- HABITABLE STRUCTURES (WITHIN 500 FEET OF ROUTE)
- STUDY AREA BOUNDARY
- PROJECT ENDPOINT
- NODE BETWEEN ADJACENT ROUTE LINKS
- PRELIMINARY ALTERNATIVE ROUTE LINKS
- TRACT NUMBER AND BOUNDARY
- PARK / RECREATIONAL AREA
- SOLAR FACILITY*
- WATER BODY
- CITY LIMIT
- COUNTY BOUNDARY
- PUBLIC ROAD
- RAILROAD
- EXISTING TRANSMISSION LINE
- JUSTY APPROVED TRANSMISSION LINE
- PIPELINE 6" AND GREATER
- PIPELINE LESS THAN 6"
- WATERWAYS
- RAILROAD COMMISSION WELL DATA
- TEXAS WATER DEVELOPMENT BOARD WATER WELL DATA
- REGISTERED AIRPORT / AIRSTRIP
- UNREGISTERED AIRSTRIP
- HELICOPTER PAD
- HISTORICAL MARKER
- TRAVELING IRRIGATION
- LANDFILL
- NATIONAL REGISTER OF HISTORIC PLACES SITE
- WIND TURBINE
- CEMETERY
- SCHOOL
- COMMUNICATION TOWER AM
- COMMUNICATION TOWER FM & OTHER ELECTRONIC INSTALLATIONS
- UNINCORPORATED PLACE

Scale

0 2,500 5,000 7,500 Feet

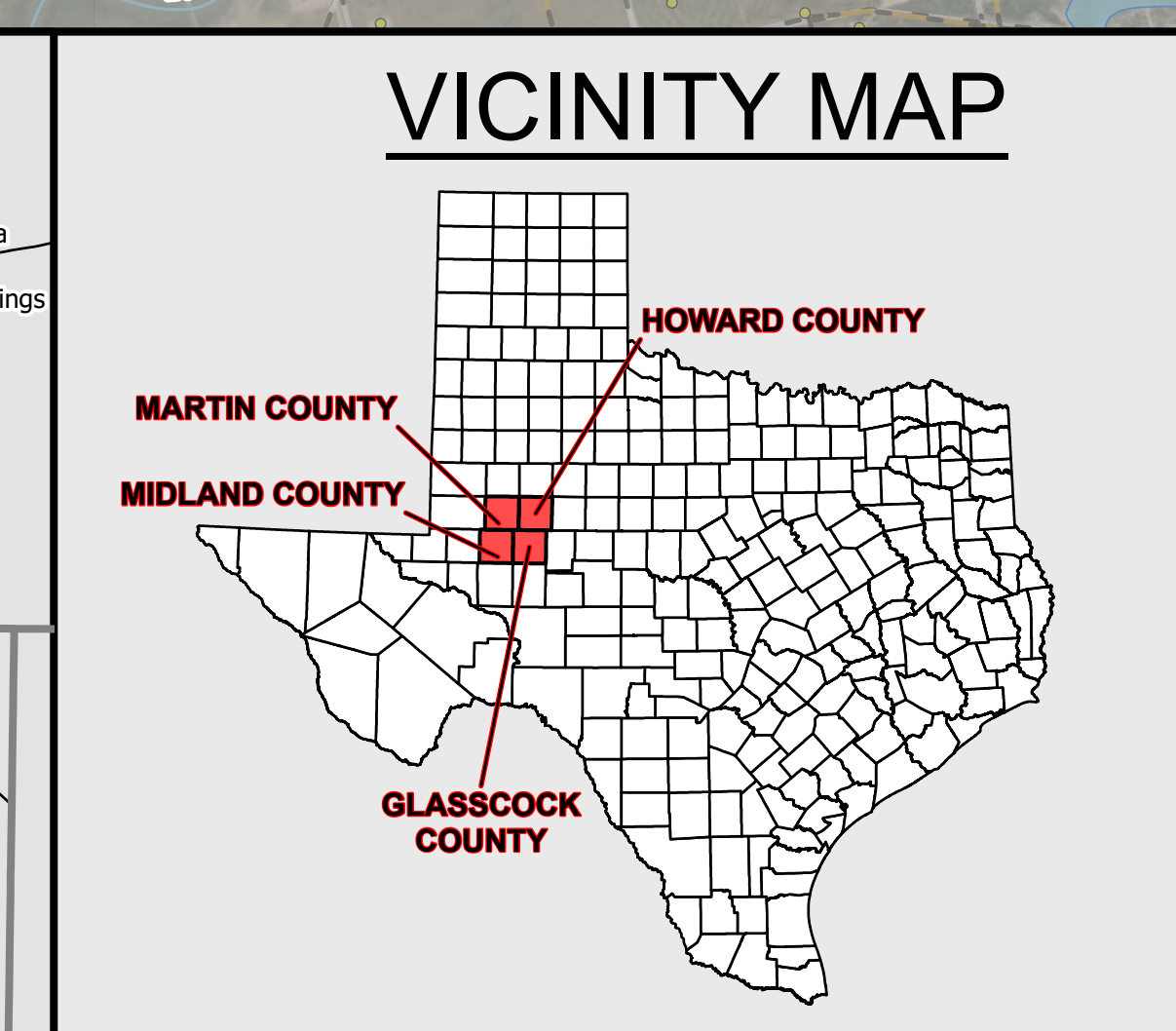
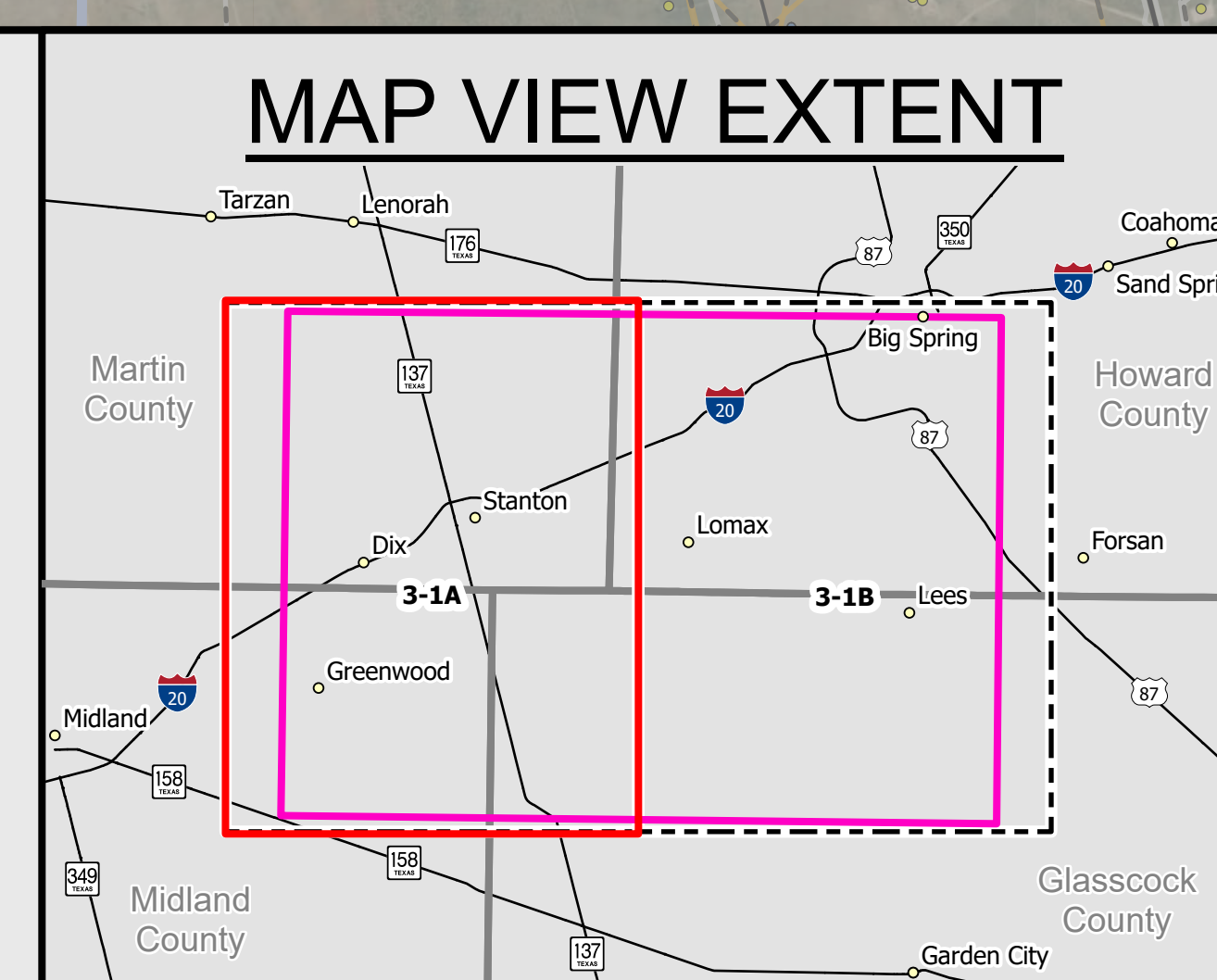
0 0.5 1 2 Miles

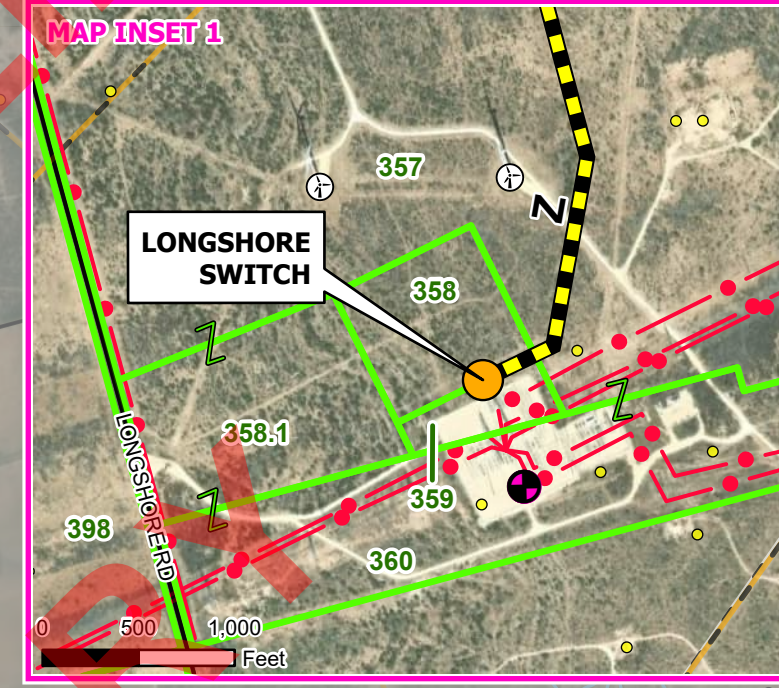
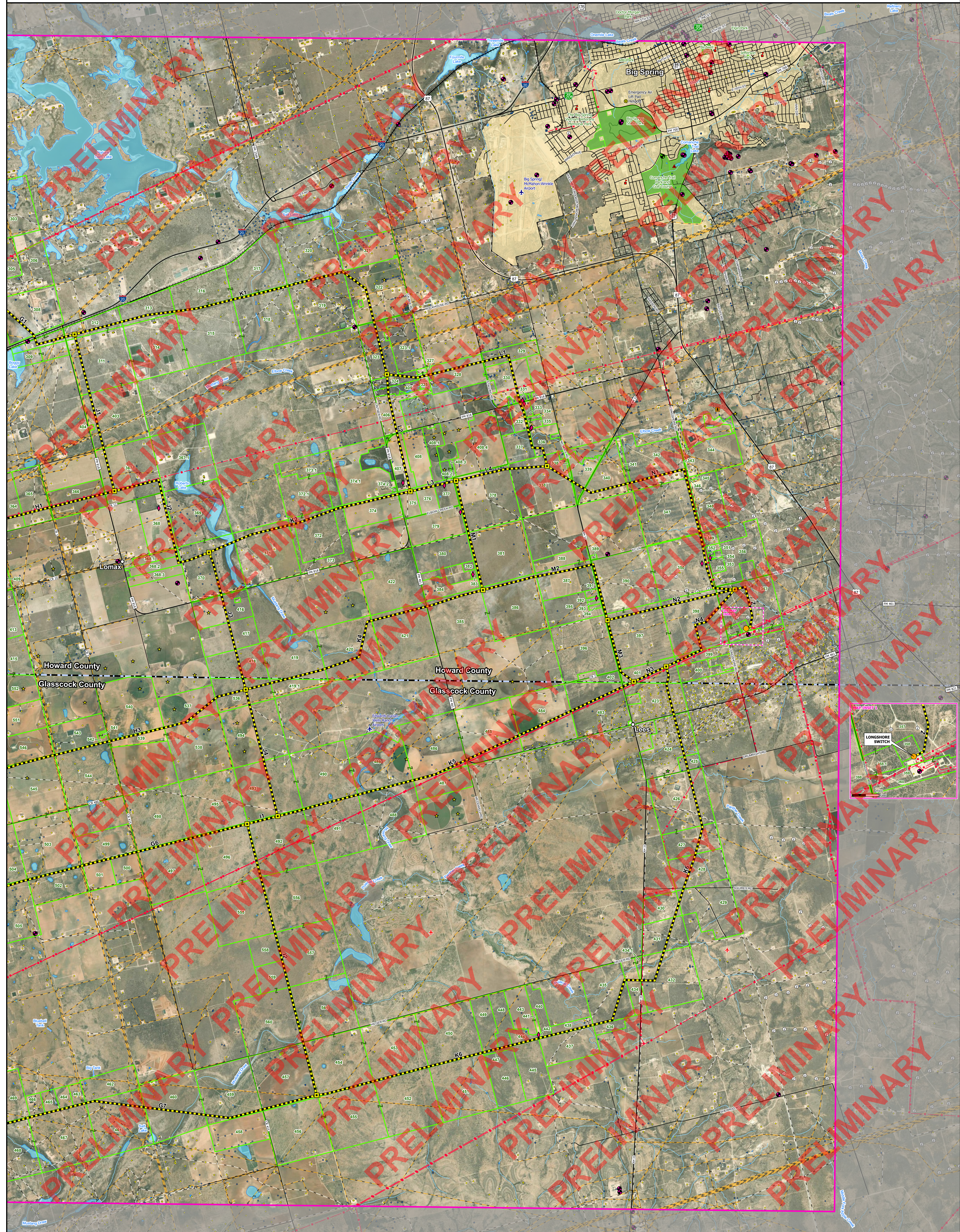
North Arrow

Notes:

- Some legend symbols are enlarged for easier identification.
- Sensitive cultural resource data is not shown on this map as this data is not to be reproduced, distributed, or released to the public.
- Data is for display purposes only. All features and boundaries have been approximated based on information gathered from review of public resources and from field reconnaissance.
- This map contains county tax office and appraisal district data. Property lines shown are approximate and are not verified by field survey. Property data prepared by Integra Realty Resources with route location furnished by Kimley-Horn.
- Legend items indicated by (*) represent features that were researched, verified, and recorded but otherwise beyond the map extents, and cannot be located on the map.
- Aerial photography is from the most recent publicly available database (ESRI 2025, NAIP 2024).
- Data Sources: TxDOT, The Railroad Commission of Texas, Federal Aviation Administration, Federal Communications Commission, Texas Water Development Board, Texas Historical Commission, Texas Parks and Wildlife Department, USGS 3D Hydrography Program, US Photovoltaic Database.
- Due to the potential horizontal inaccuracies of the aerial photography and the data utilized, all habitable structures within 500 feet have been identified.

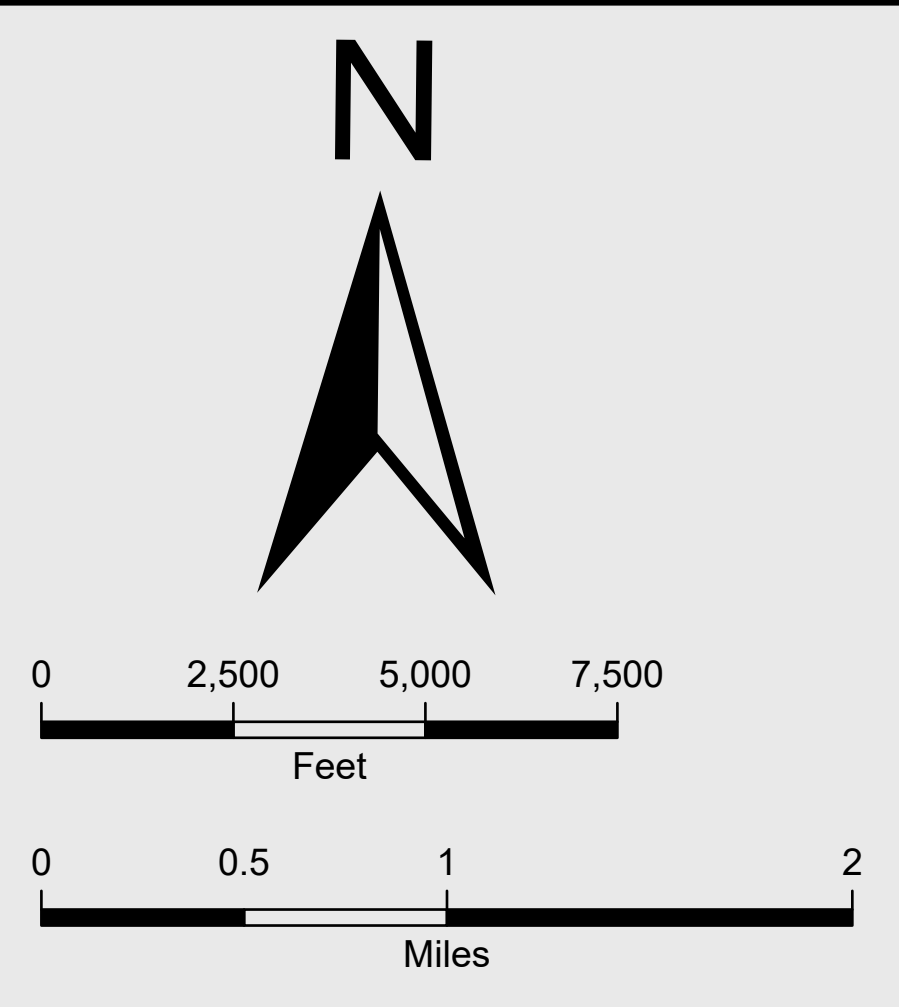
Date Printed: 6/29/2025





Legend

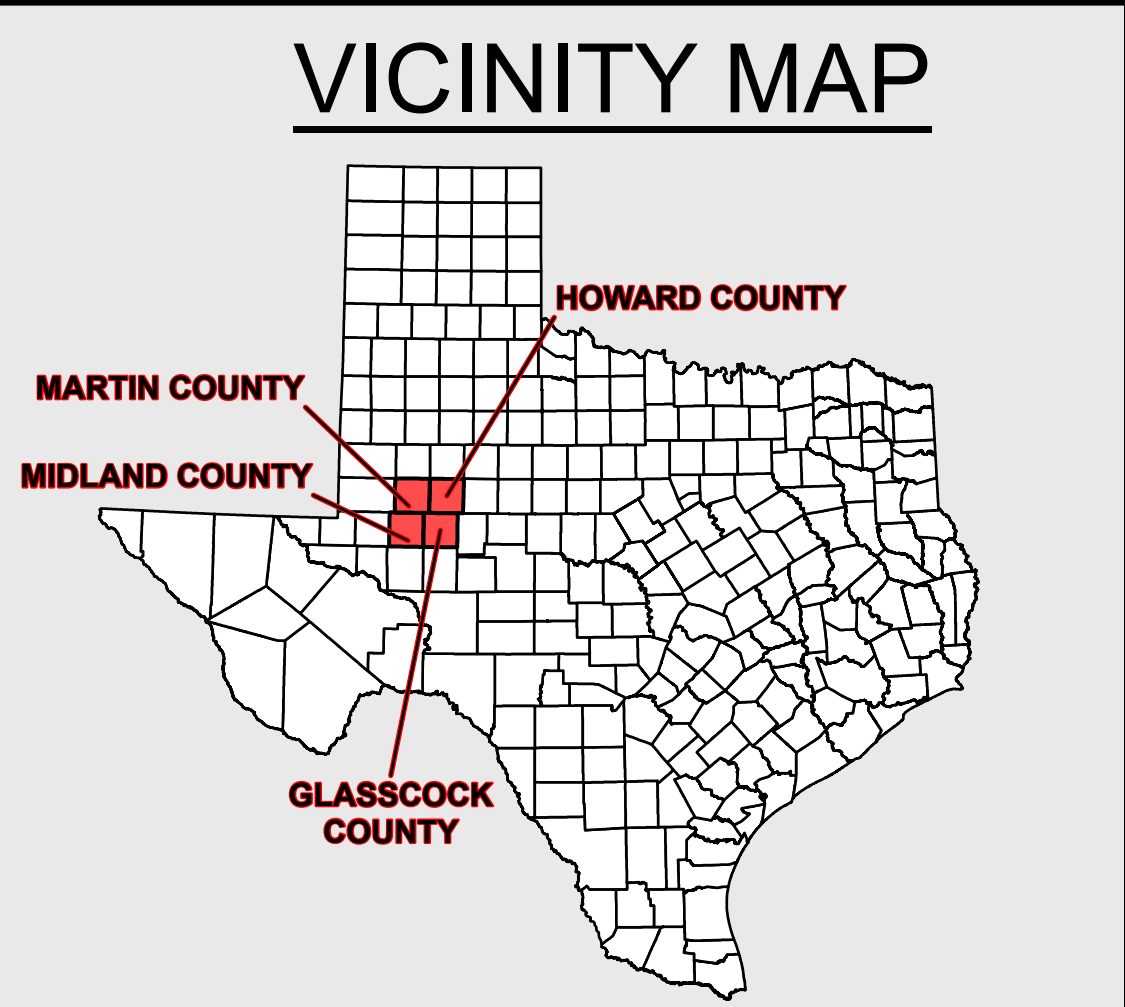
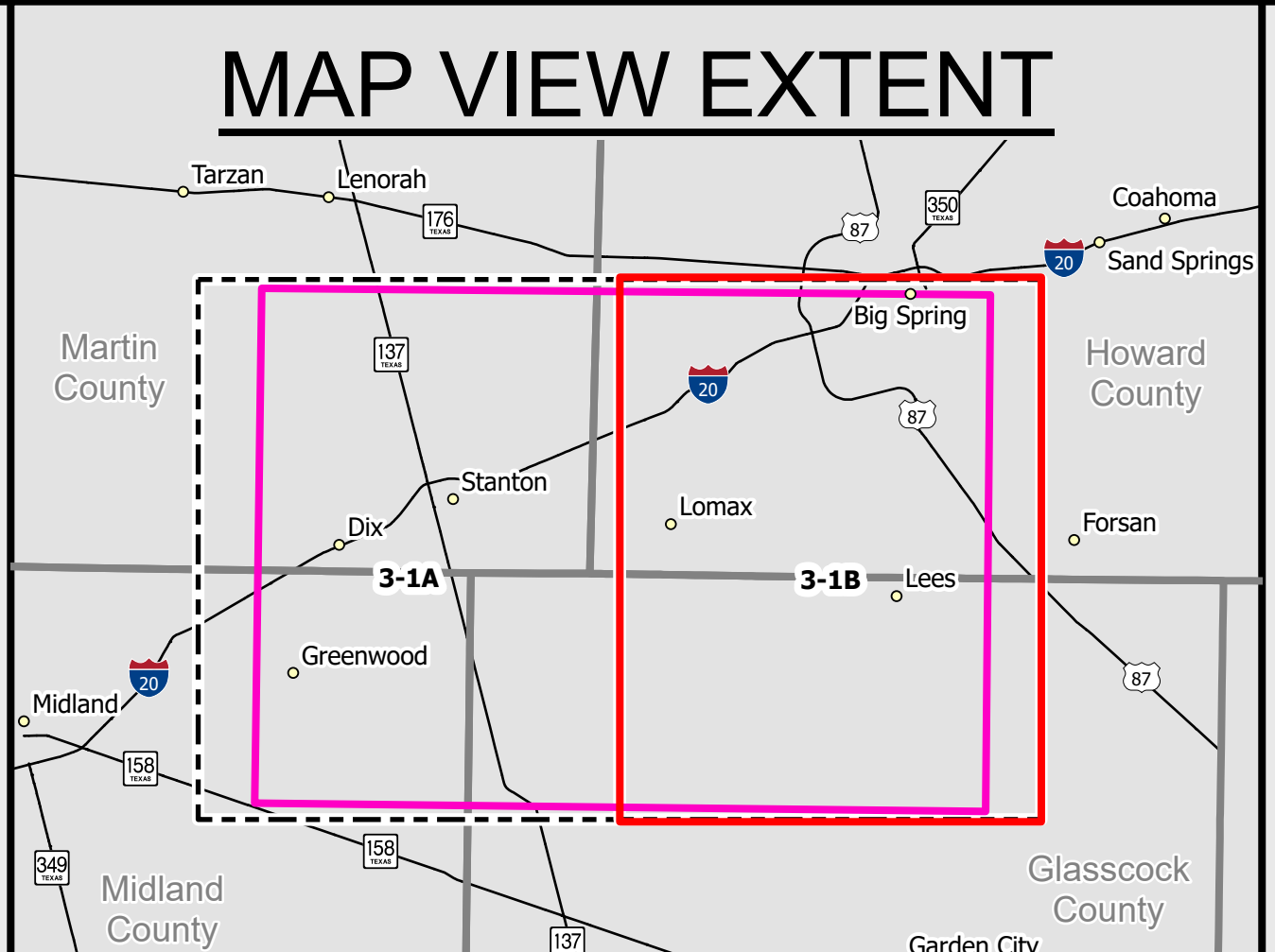
	HABITABLE STRUCTURES (WITHIN 500 FEET OF ROUTE)		WATERWAYS
	STUDY AREA BOUNDARY		RAILROAD COMMISSION WELL DATA
	PROJECT ENDPOINT		TEXAS WATER DEVELOPMENT BOARD WATER WELL DATA
	NODE BETWEEN ADJACENT ROUTE LINKS		REGISTERED AIRPORT / AIRSTRIP
	PRELIMINARY ALTERNATIVE ROUTE LINKS		UNREGISTERED AIRSTRIP
	TRACT NUMBER AND BOUNDARY		HELICOPTER PAD
	PRELIMINARY ALTERNATIVE ROUTE LINKS		HISTORICAL MARKER
	PARK / RECREATIONAL AREA		TRAVELING IRRIGATION
	SOLAR FACILITY*		LANDFILL
	WATER BODY		NATIONAL REGISTER OF HISTORIC PLACES SITE
	CITY LIMIT		WIND TURBINE
	COUNTY BOUNDARY		CEMETERY
	PUBLIC ROAD		SCHOOL
	RAILROAD		COMMUNICATION TOWER AM
	EXISTING TRANSMISSION LINE		COMMUNICATION TOWER FM & OTHER ELECTRONIC INSTALLATIONS
	APPROVED TRANSMISSION LINE		UNINCORPORATED PLACE
	PIPELINE 6" AND GREATER		
	PIPELINE LESS THAN 6"		

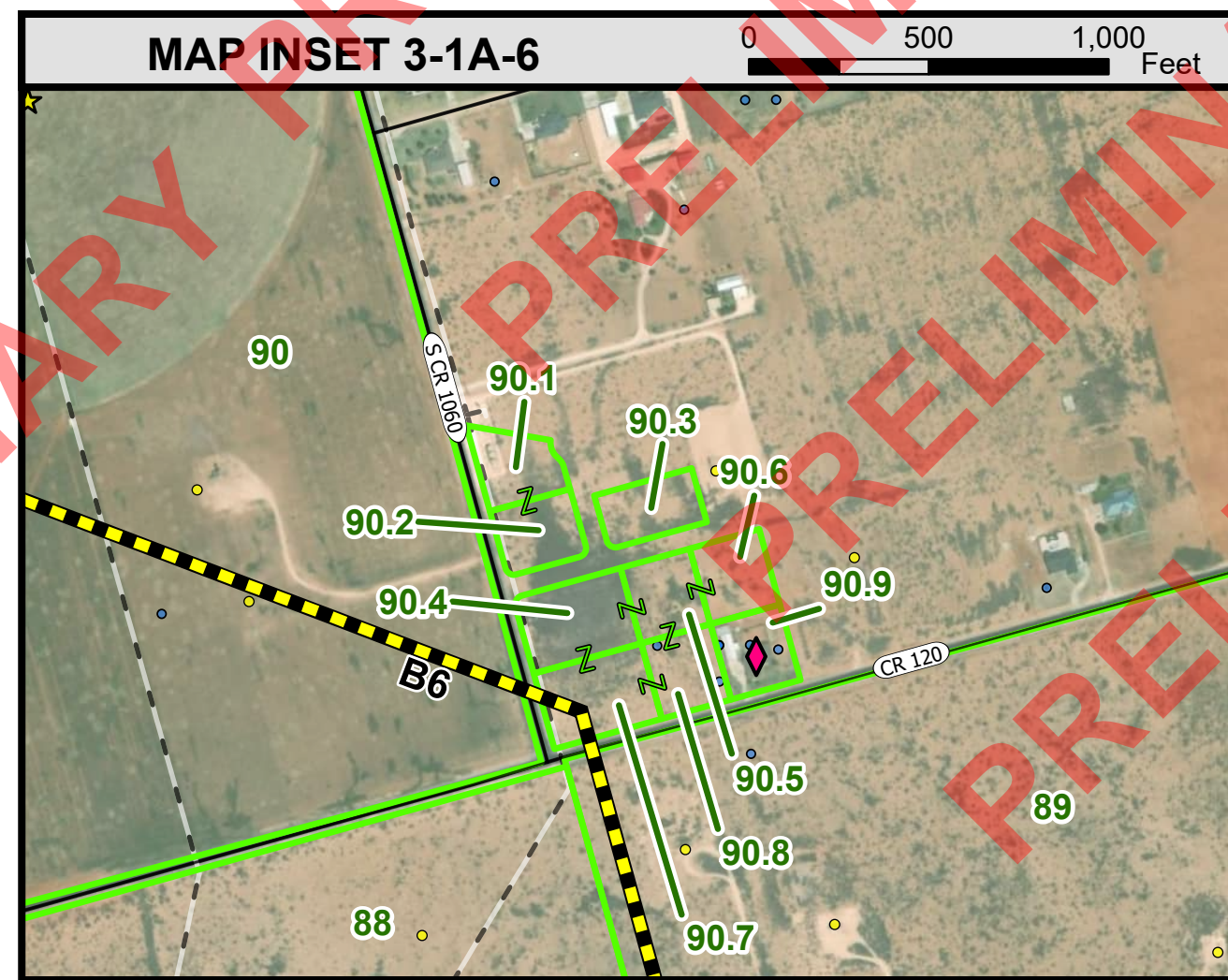
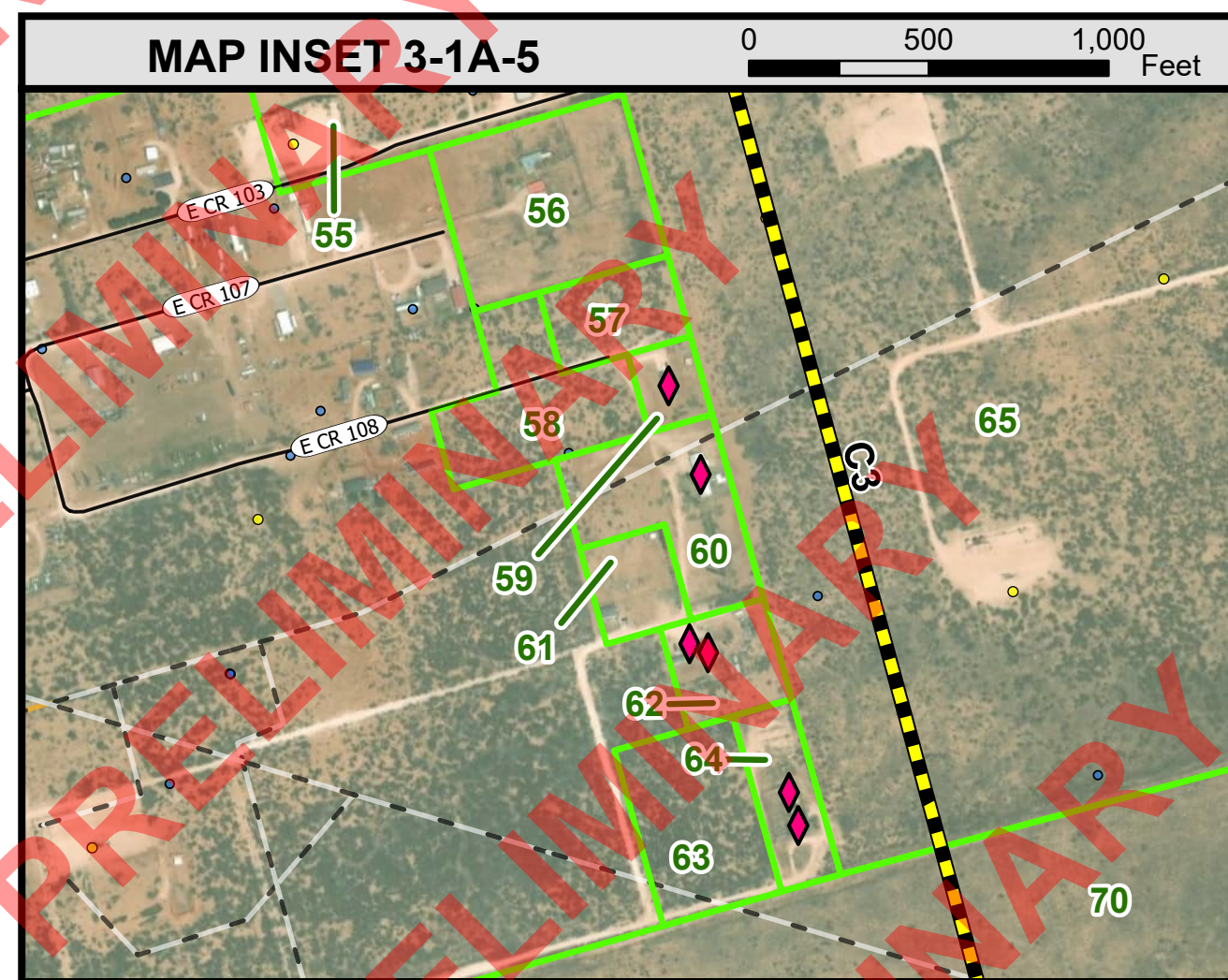
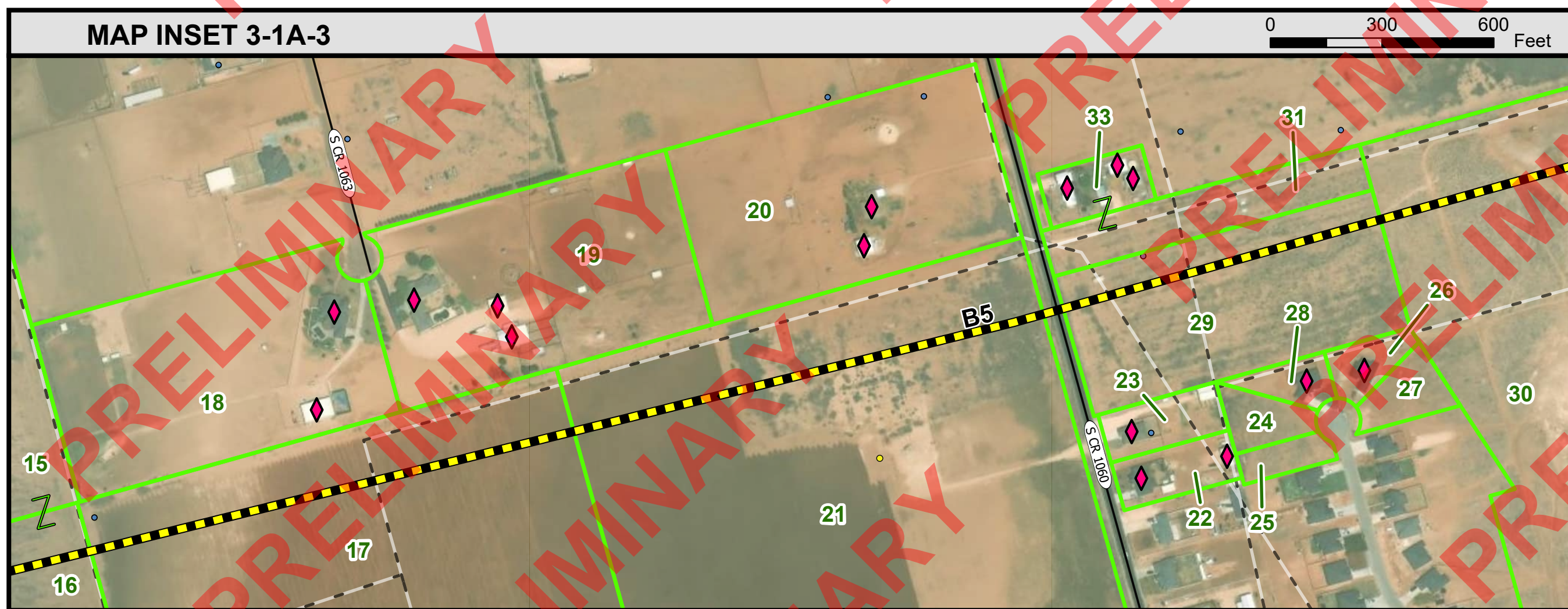
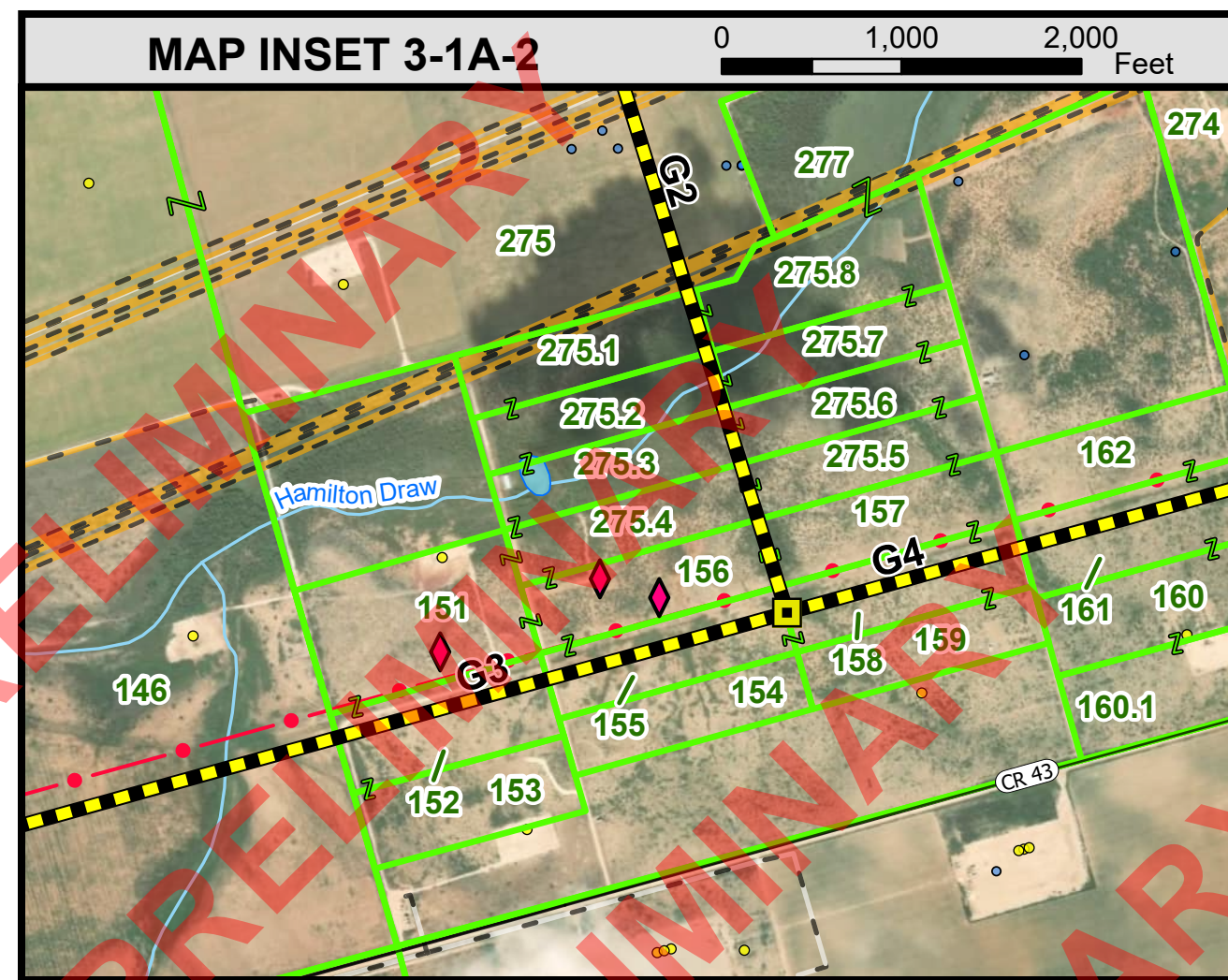
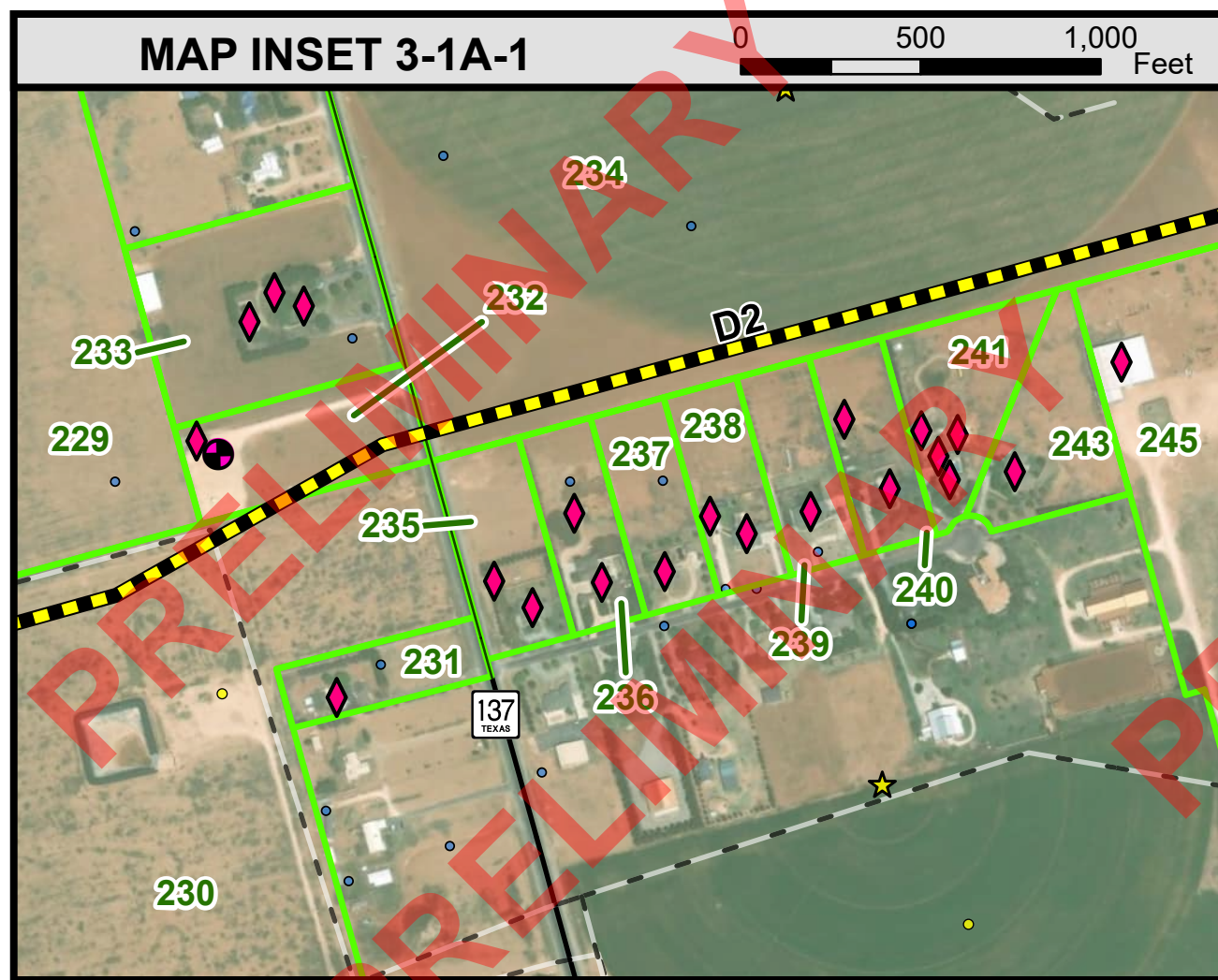


Notes:

- Some legend symbols are enlarged for easier identification.
- Sensitive cultural resource data is not shown on this map as this data is not to be reproduced, distributed, or released to the public.
- Data is for display purposes only. All features and boundaries have been approximated based on information gathered from review of public resources and from field reconnaissance.
- This map contains county tax office and appraisal district data. Property lines shown are approximate and are not verified by field survey. Property data prepared by Integra Realty Resources with route location furnished by Kimley-Horn.
- Legend items indicated by (*) represent features that were researched, verified, and recorded but otherwise beyond the map extents, and cannot be located on the map.
- Aerial photography is from the most recent publicly available database (ESRI 2025, NAIP 2024).
- Data Sources: TxDOT, The Railroad Commission of Texas, Federal Aviation Administration, Federal Communications Commission, Texas Water Development Board, Texas Historical Commission, Texas Parks and Wildlife Department, USGS 3D Hydrography Program, US Photovoltaic Database.
- Due to the potential horizontal inaccuracies of the aerial photography and the data utilized, all habitable structures within 520 feet have been identified.

Date Printed: 6/29/2025



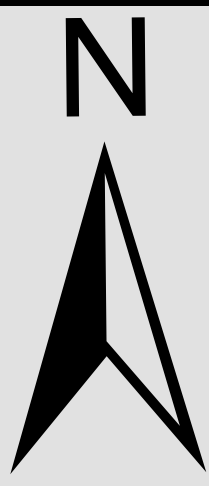


Remainder of page intentionally left blank

LONGSHORE SWITCH -
ROCKHOUND SWITCH
345 kV Transmission Line Project
Map Insets
Insets 3-1A-1 through 3-1A-6

Legend

- HABITABLE STRUCTURES (WITHIN 500 FEET OF ROUTE)
- STUDY AREA BOUNDARY
- PROJECT ENDPOINT
- NODE BETWEEN ADJACENT ROUTE LINKS
- PRELIMINARY ALTERNATIVE ROUTE LINKS
- TRACT NUMBER AND BOUNDARY
- PARK / RECREATIONAL AREA
- SOLAR FACILITY*
- WATER BODY
- CITY LIMIT
- COUNTY BOUNDARY
- RAILROAD
- PUBLIC ROAD
- EXISTING TRANSMISSION LINE
- PUCT APPROVED TRANSMISSION LINE
- PIPELINE 8" AND GREATER
- PIPELINE LESS THAN 8"
- WATERWAYS
- RAILROAD COMMISSION WELL DATA
- TEXAS WATER DEVELOPMENT BOARD WATER WELL DATA
- REGISTERED AIRPORT / AIRSTRIP
- UNREGISTERED AIRSTRIP
- HELICOPTER PAD
- HISTORICAL MARKER
- TRAVELING IRRIGATION
- LANDFILL
- NATIONAL REGISTER OF HISTORIC PLACES SITE
- WIND TURBINE
- CEMETERY
- SCHOOL
- COMMUNICATION TOWER AM
- COMMUNICATION TOWER FM & OTHER ELECTRONIC INSTALLATIONS
- UNINCORPORATED PLACE



Notes:

1. Some legend symbols are enlarged for easier identification.
2. Sensitive cultural resource data is not shown on this map as this data is not to be reproduced, distributed, or released to the public.
3. Data is for display purposes only. All features and boundaries have been approximated based on information gathered from review of public resources and from field reconnaissance.
4. This map contains county tax office and appraisal district data. Property lines shown are approximate and are not verified by field survey. Property data prepared by Integra Realty Resources with route location furnished by Kimley-Horn.
5. Legend items indicated by (*) represent features that were researched, verified, and recorded but are otherwise beyond the map extents, and cannot be located on the map.
6. Aerial photography is from the most recent publicly available database (ESRI 2025, NAIP 2024).
7. Data Sources: TxDOT, The Railroad Commission of Texas, Federal Aviation Administration, Federal Communications Commission, Texas Water Development Board, Texas Historical Commission, Texas Parks and Wildlife Department, USGS 3D Hydrography Program, US Photovoltaic Database.
8. Due to the potential horizontal inaccuracies of the aerial photography and the data utilized, all habitable structures within 520 feet have been identified.

Date Printed: 6/29/2026