

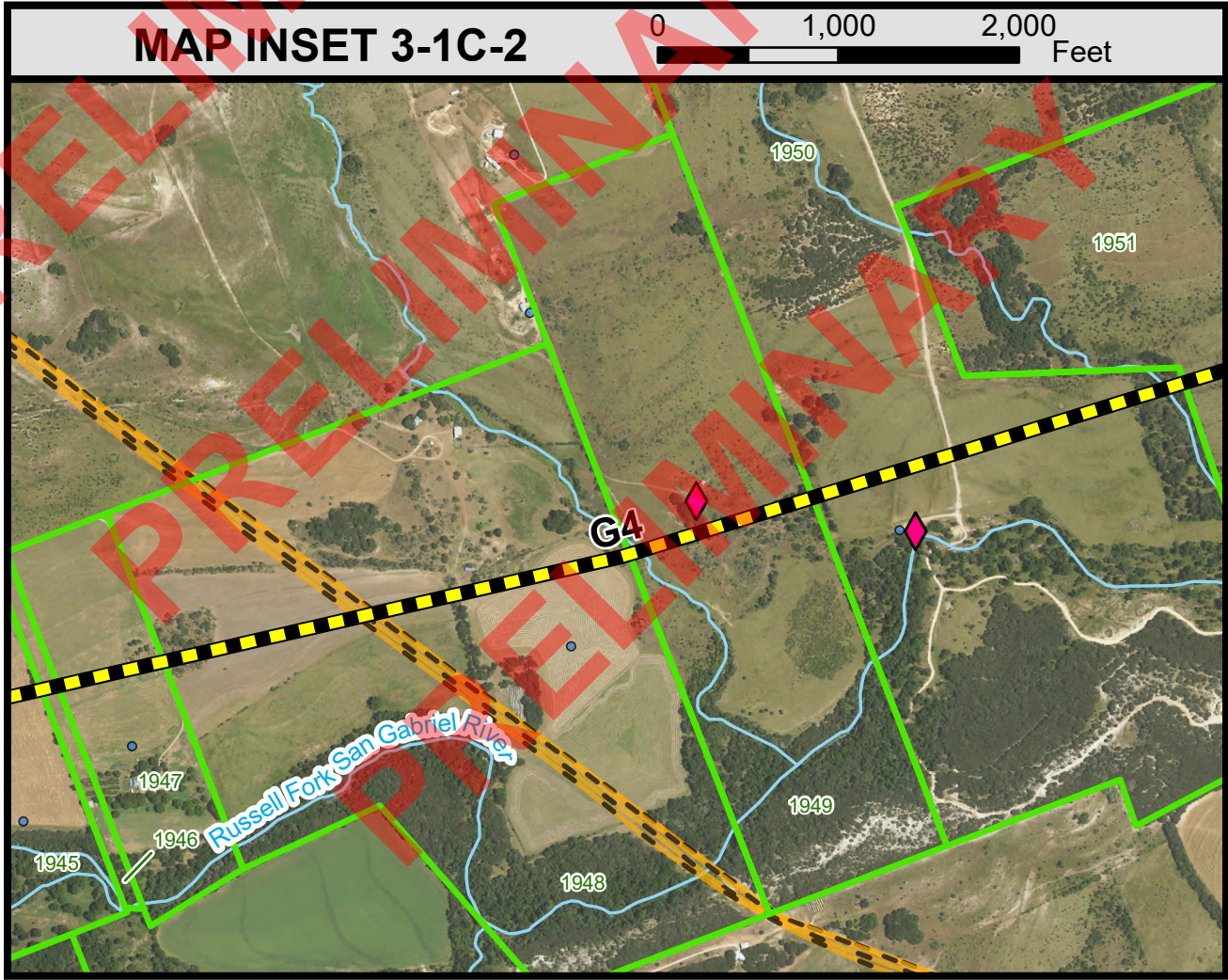
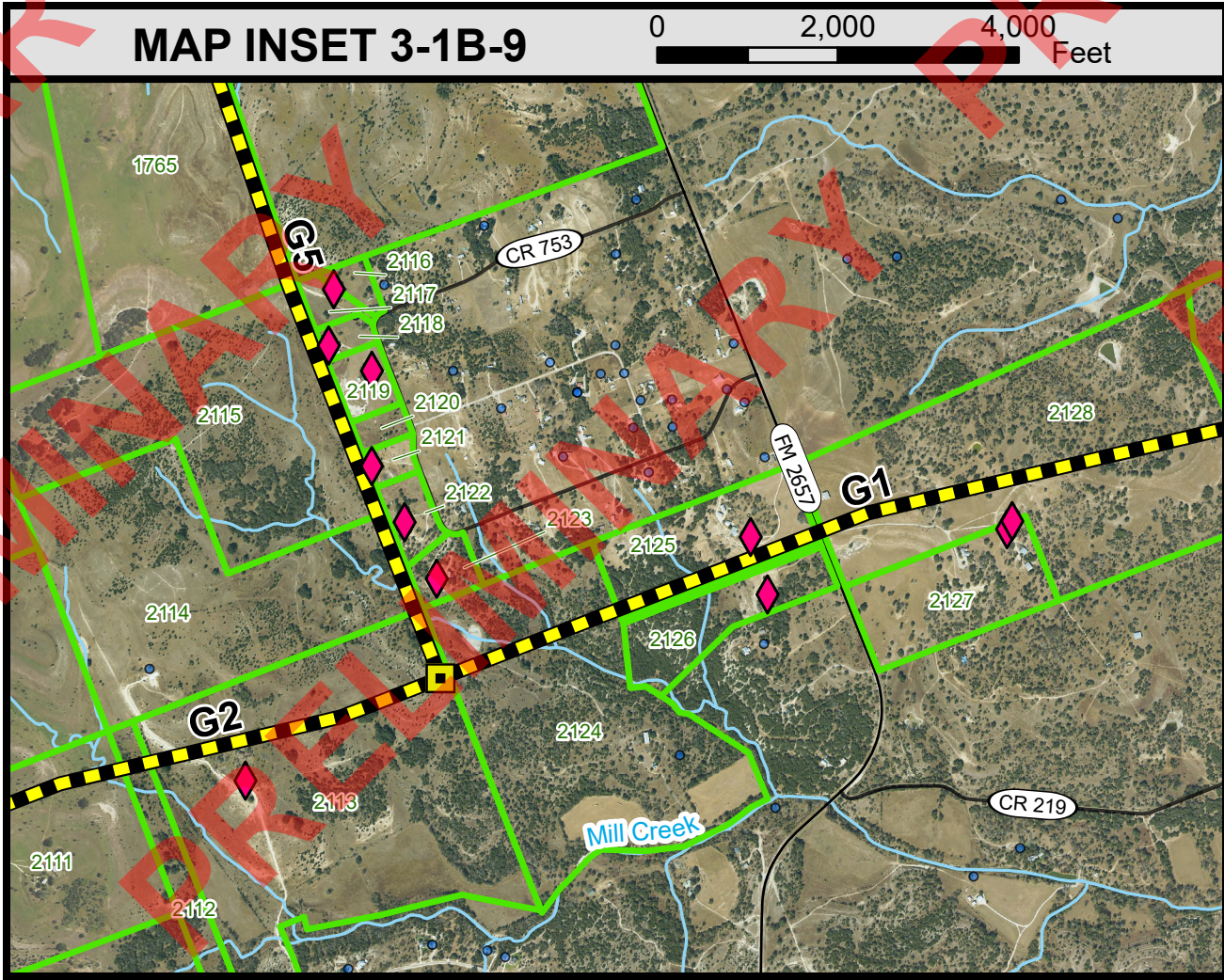
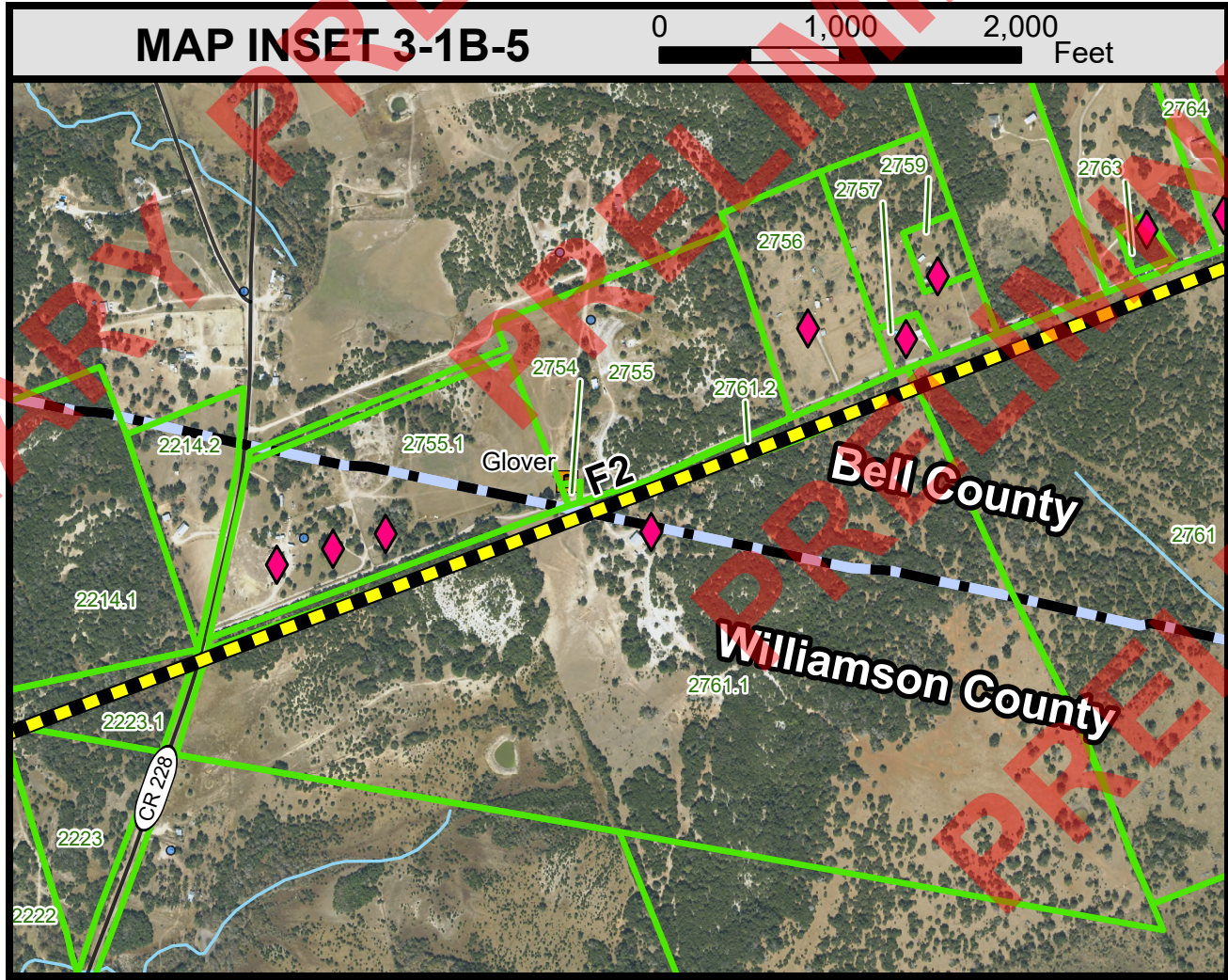
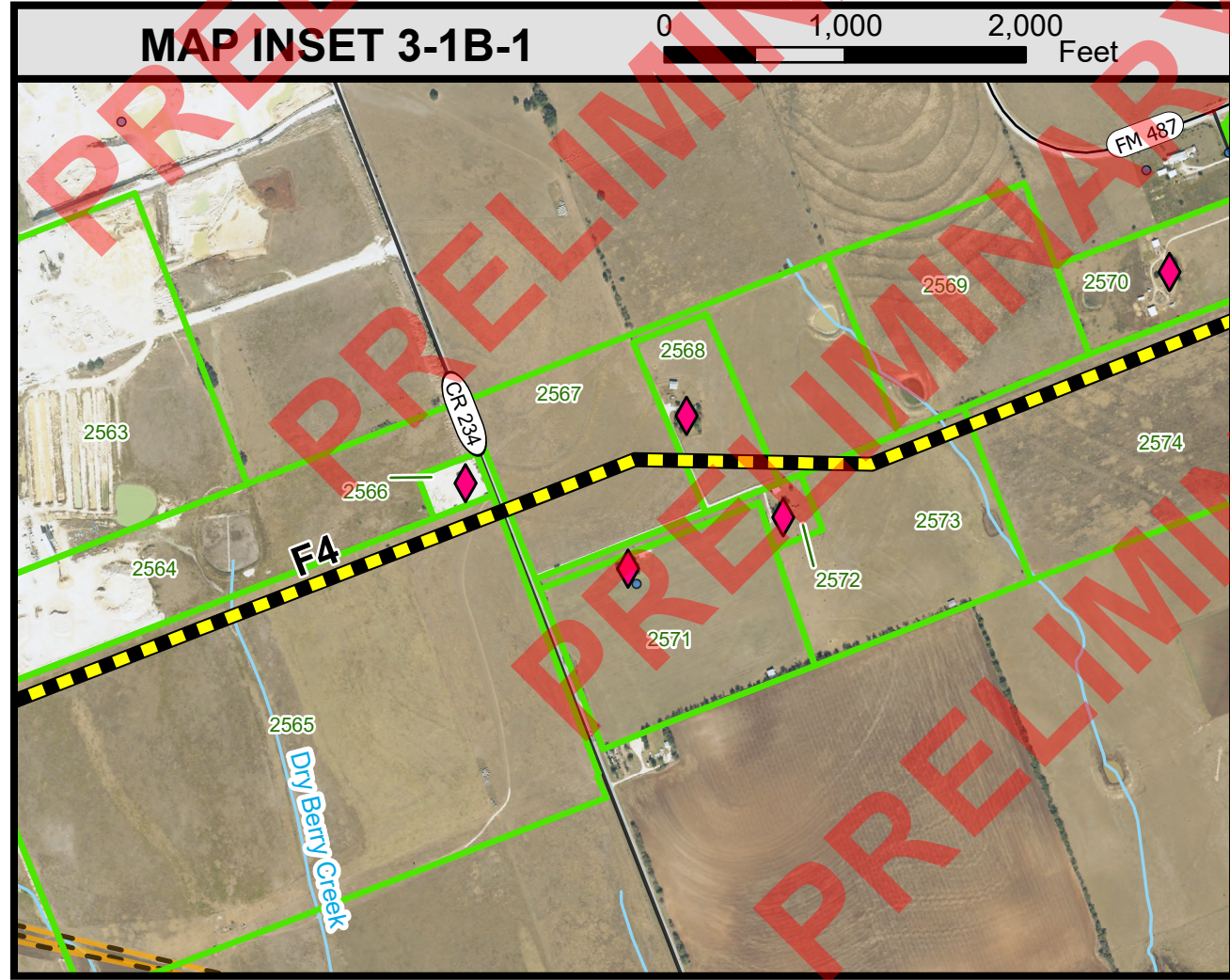
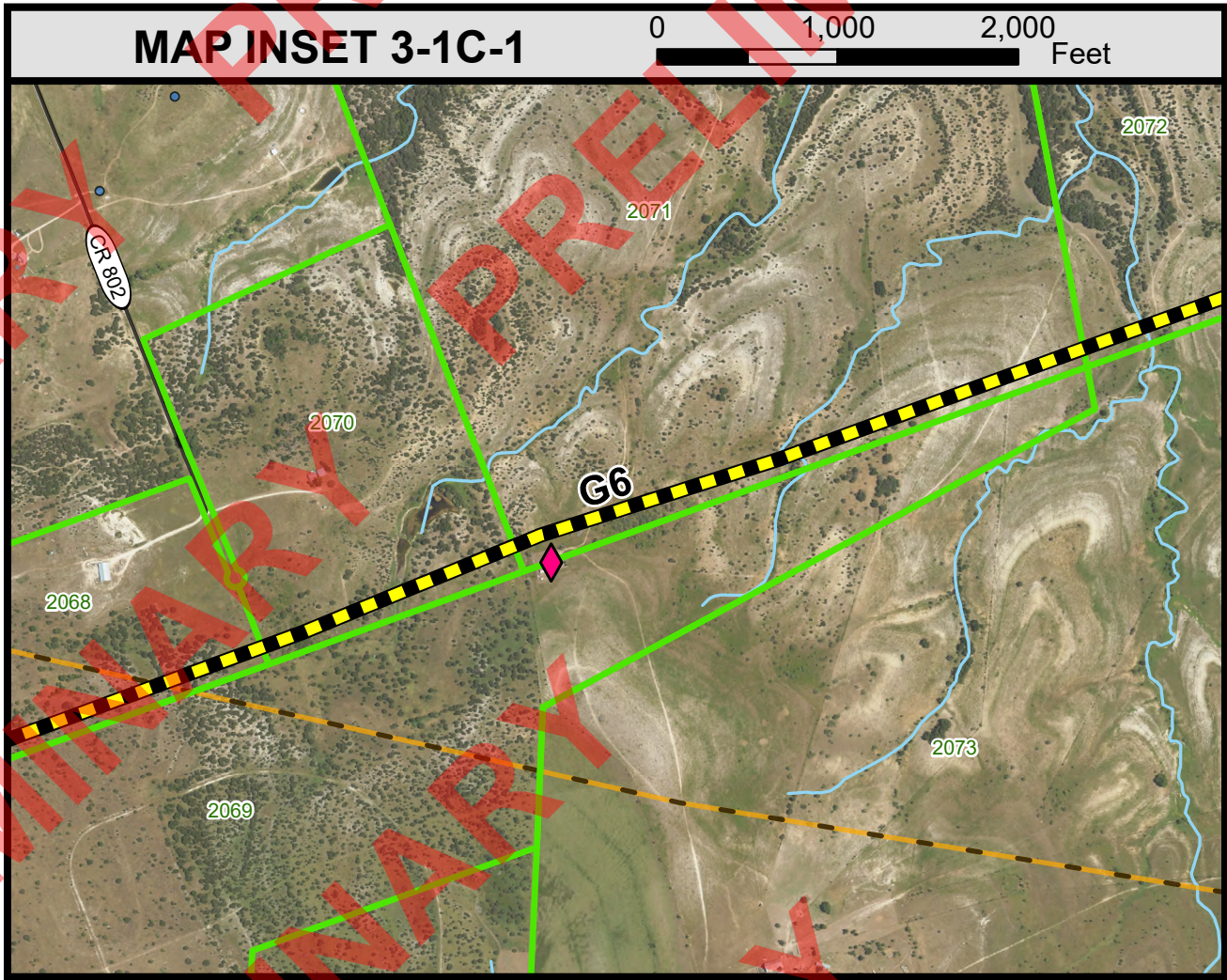
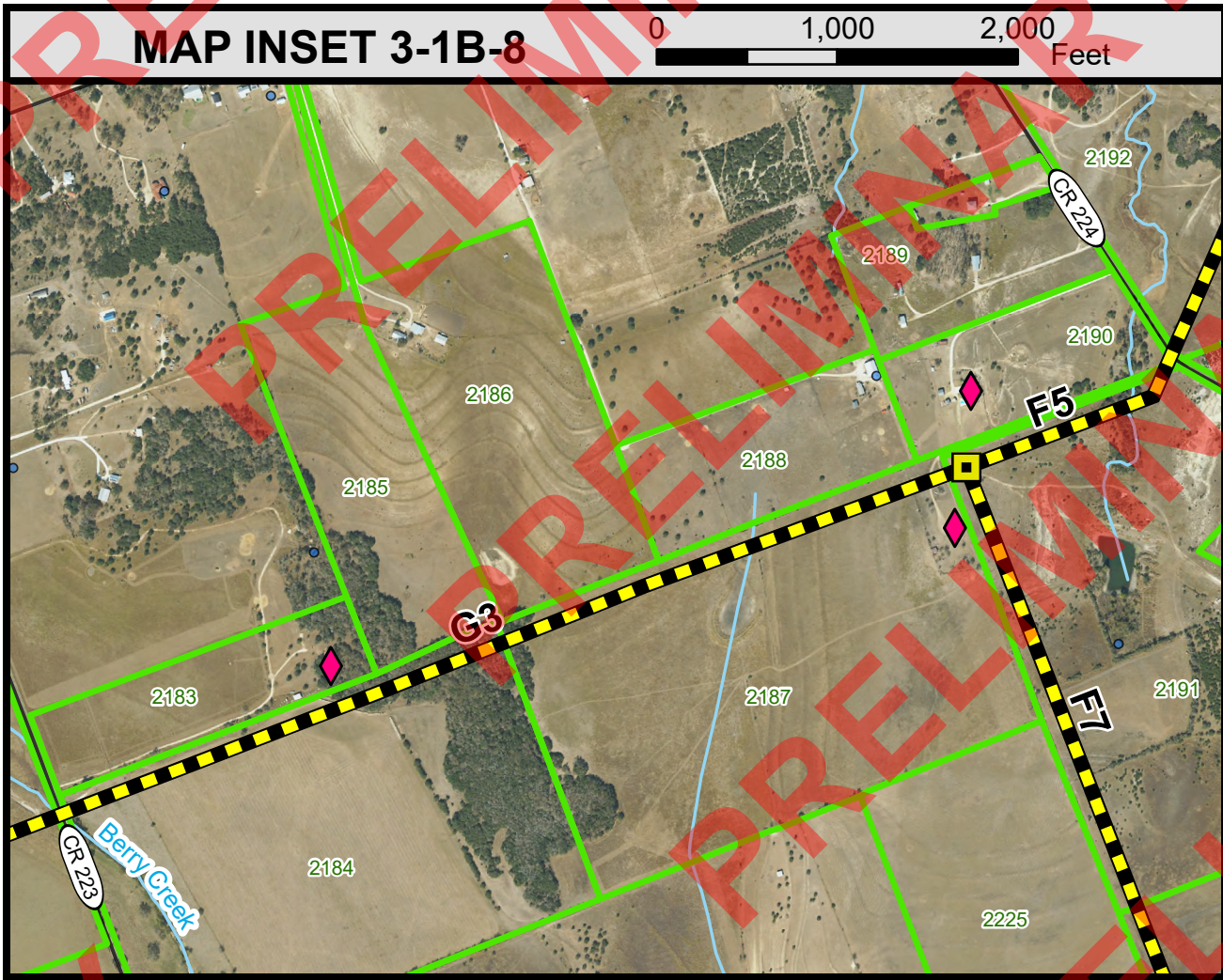
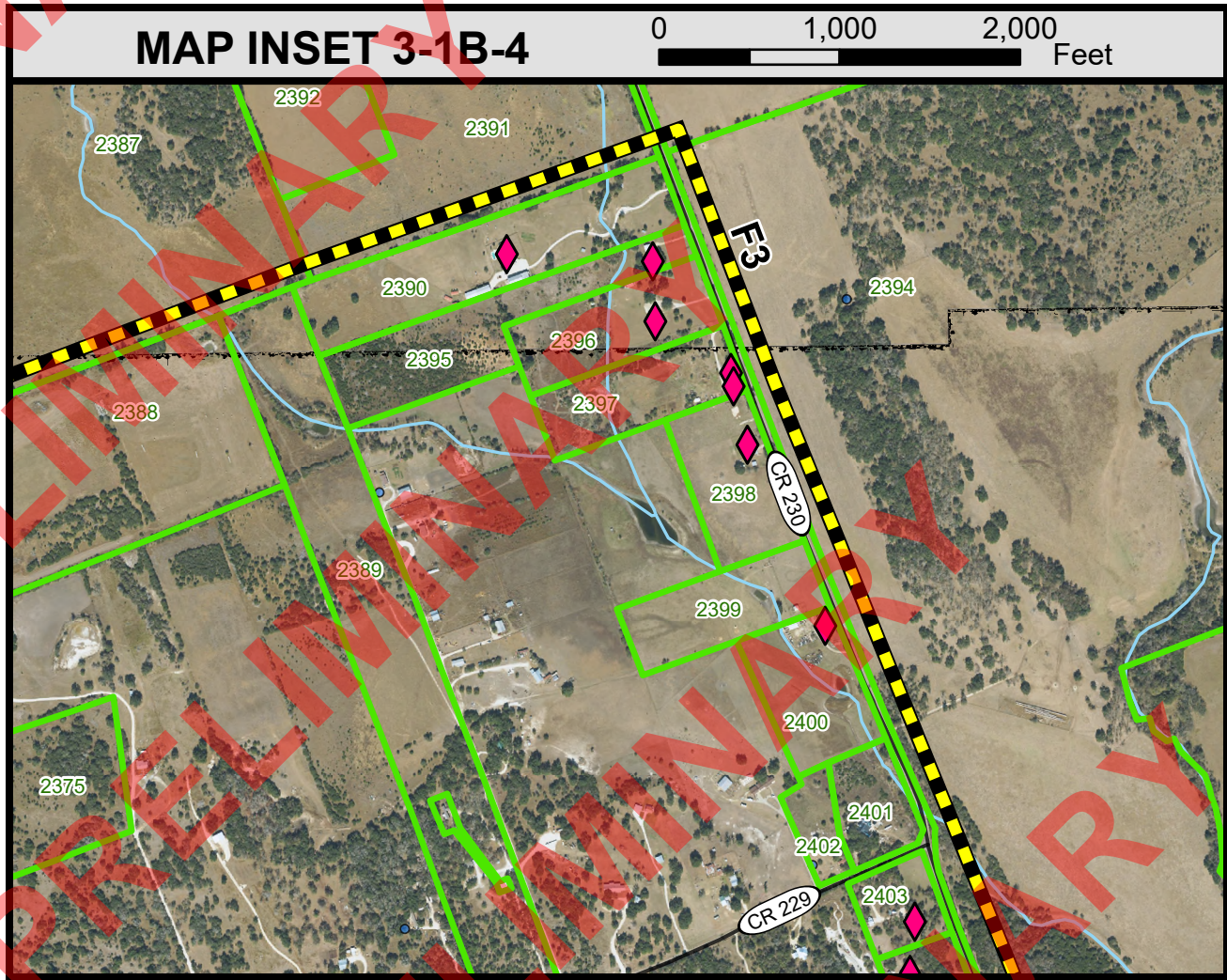
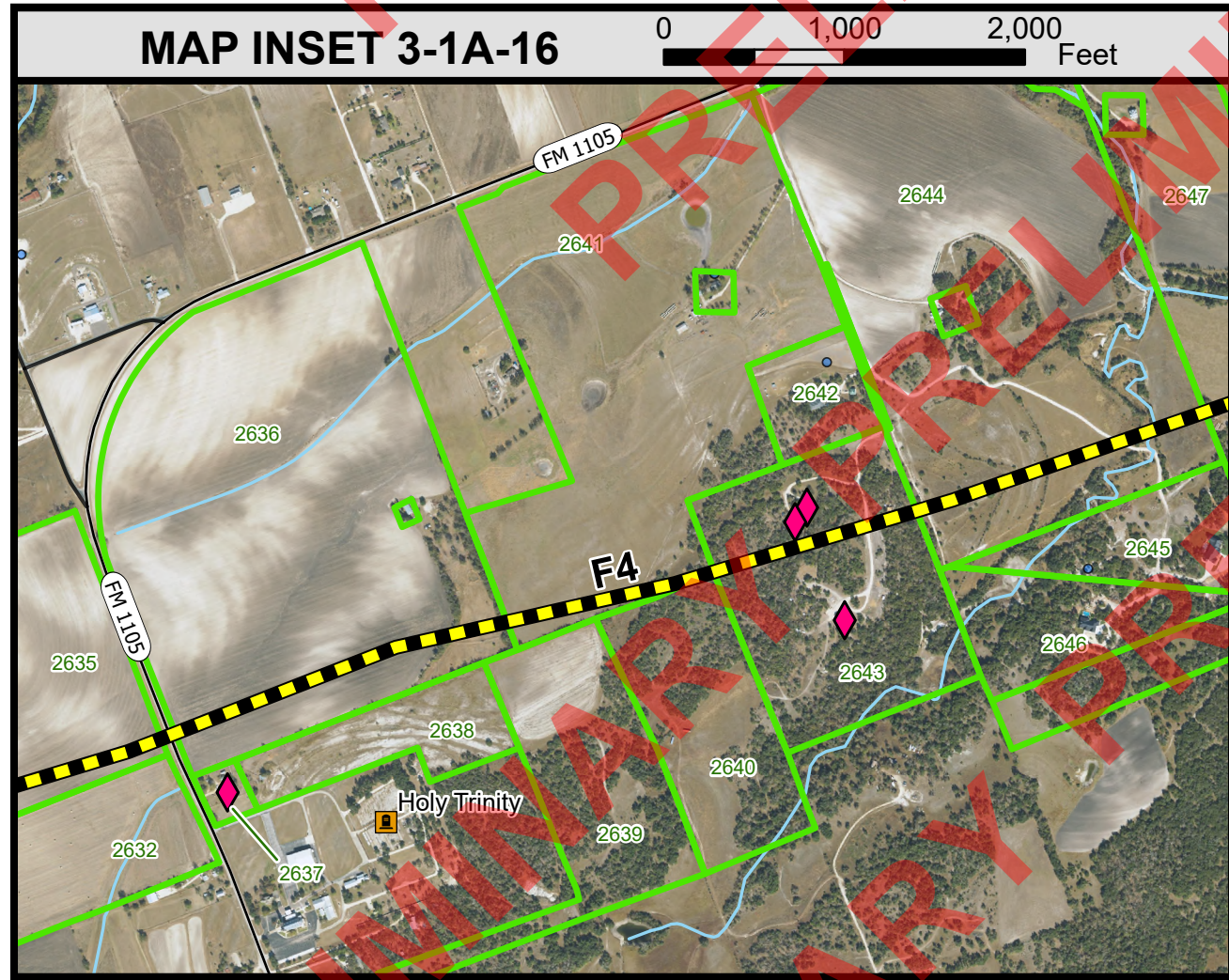
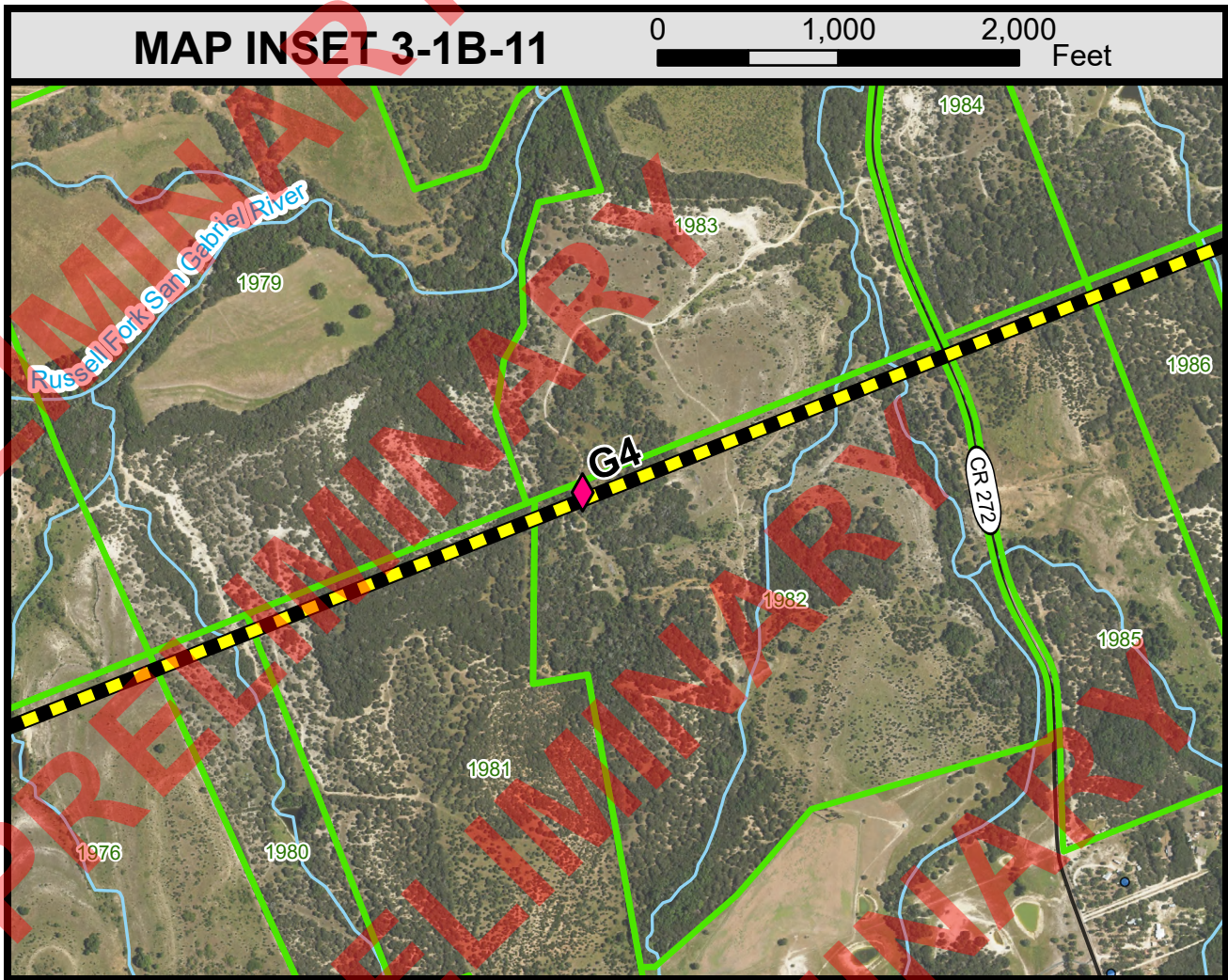
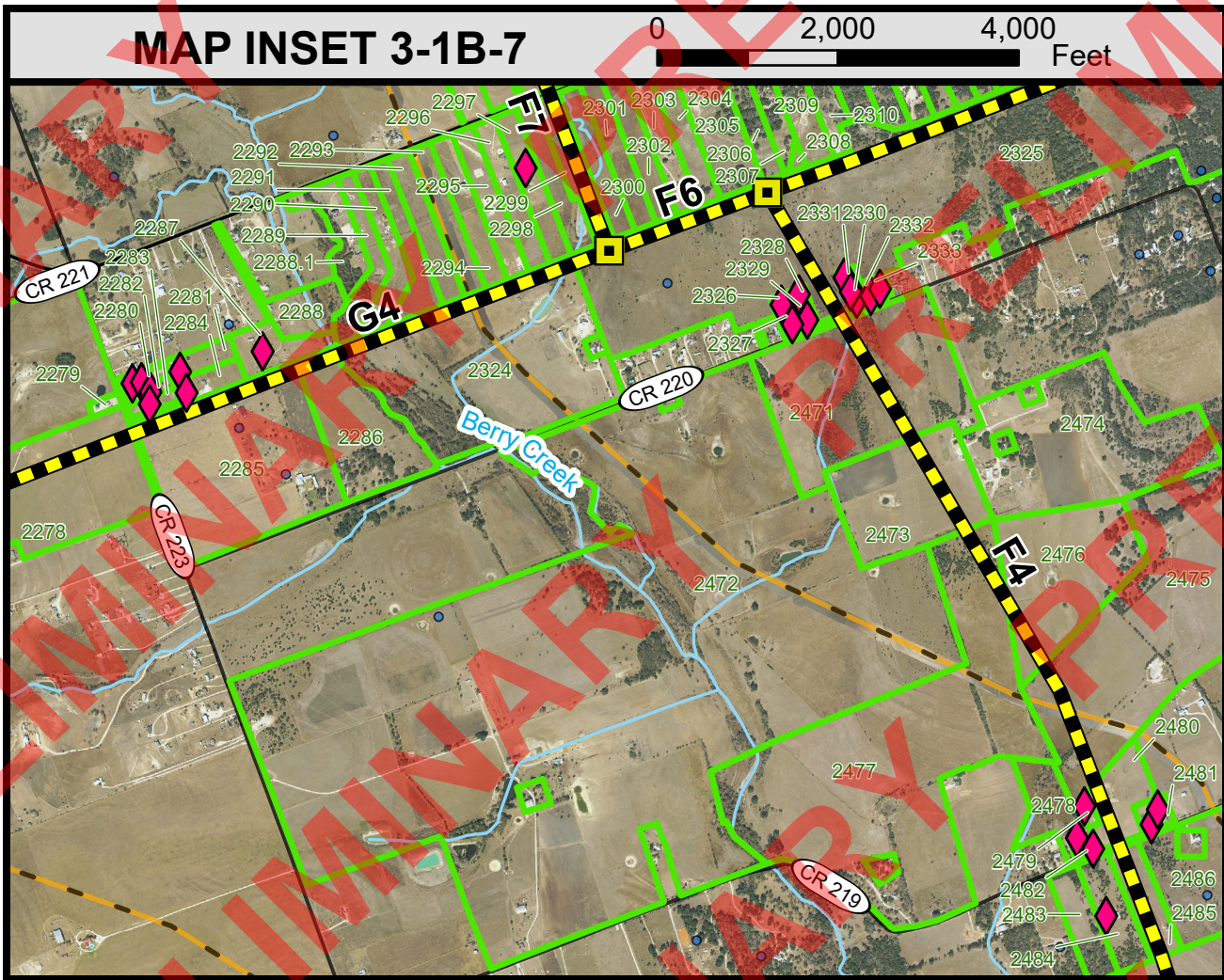
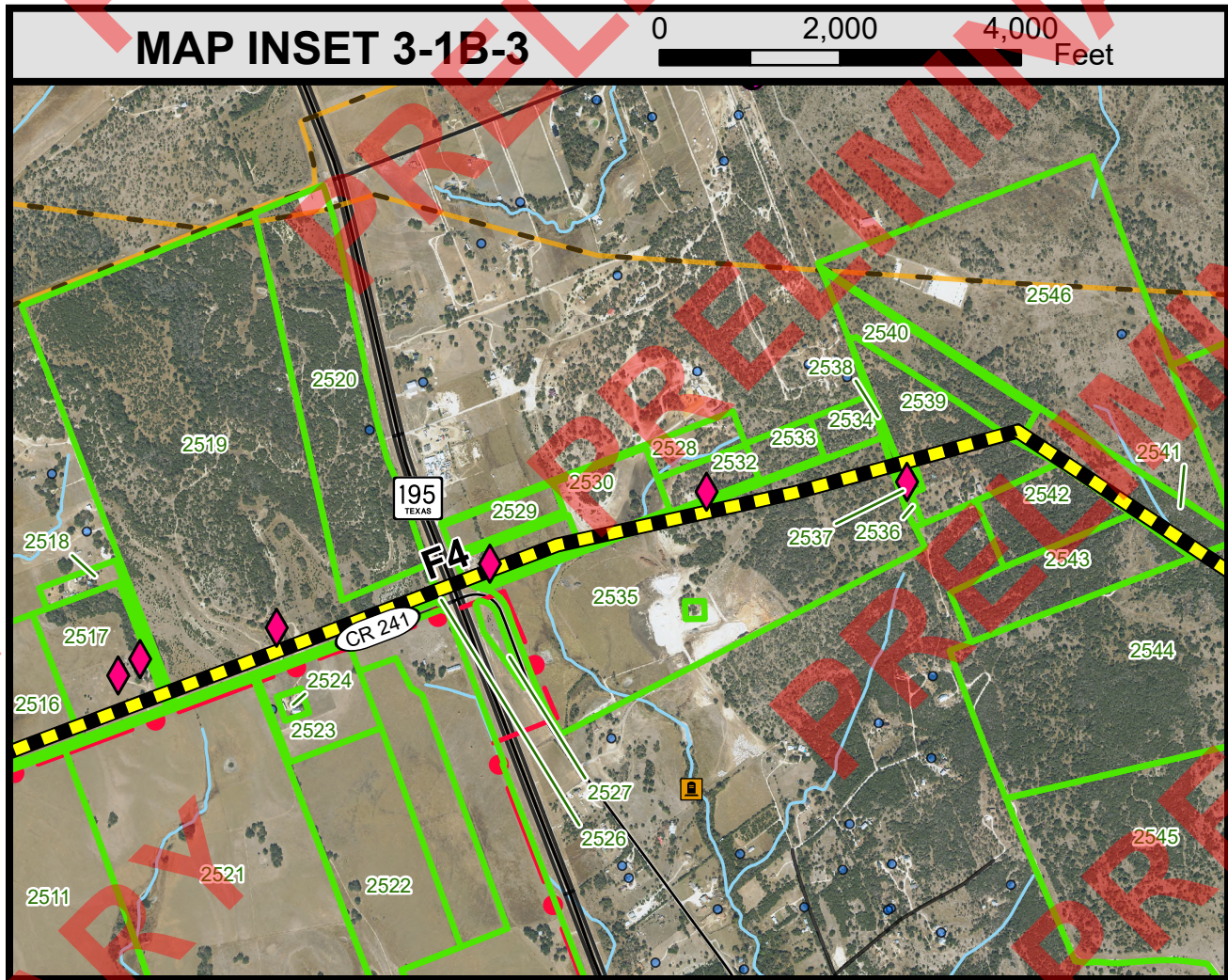
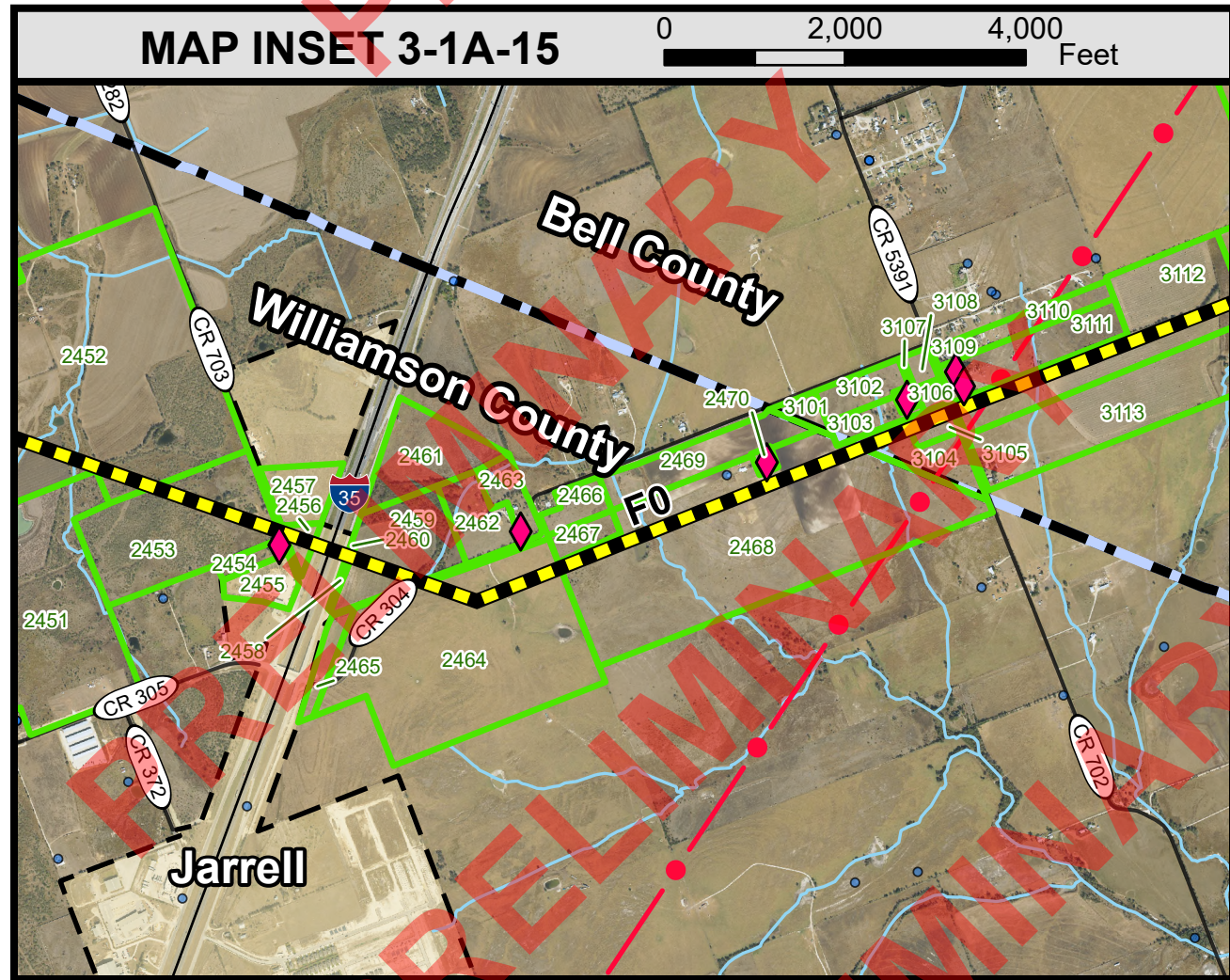
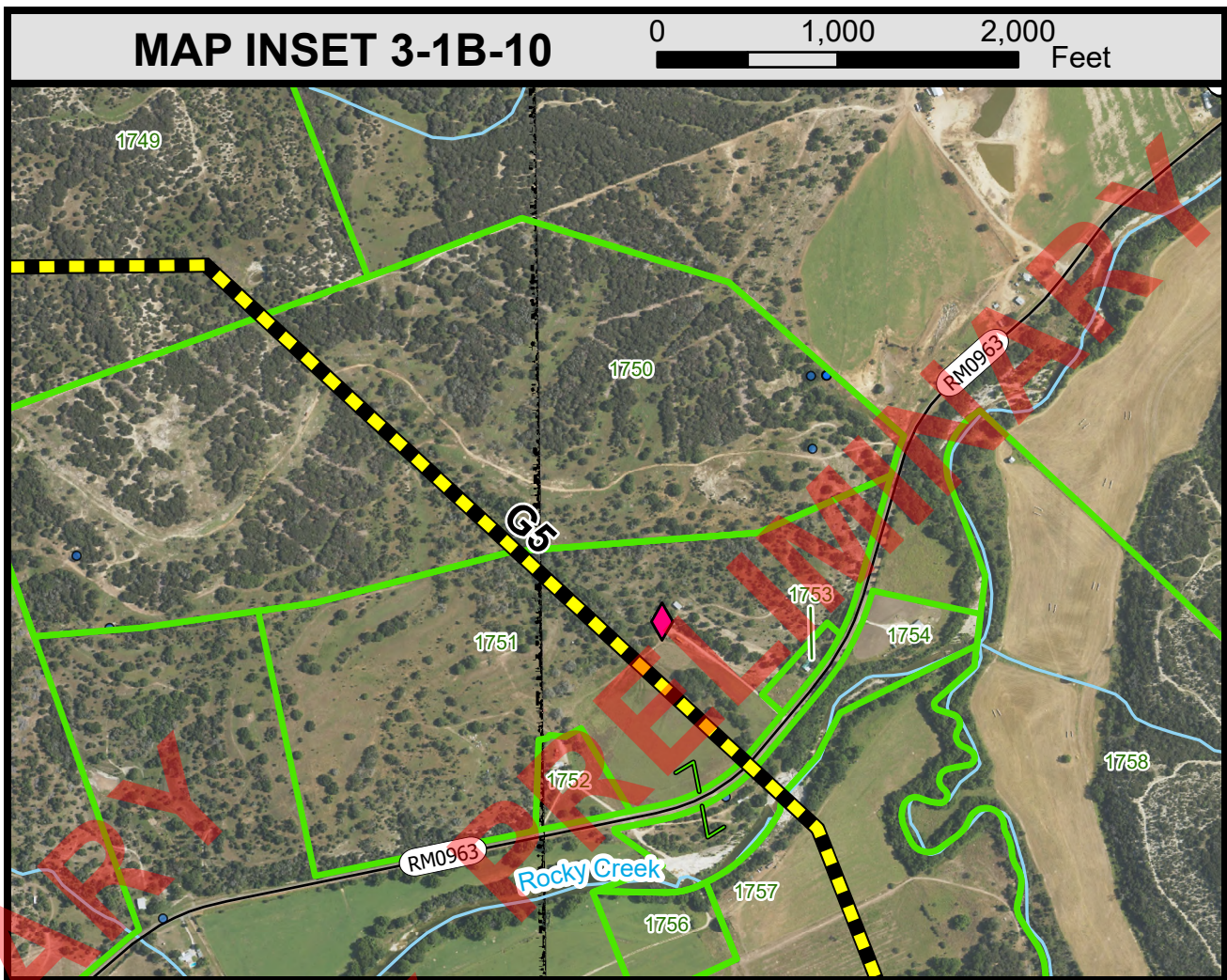
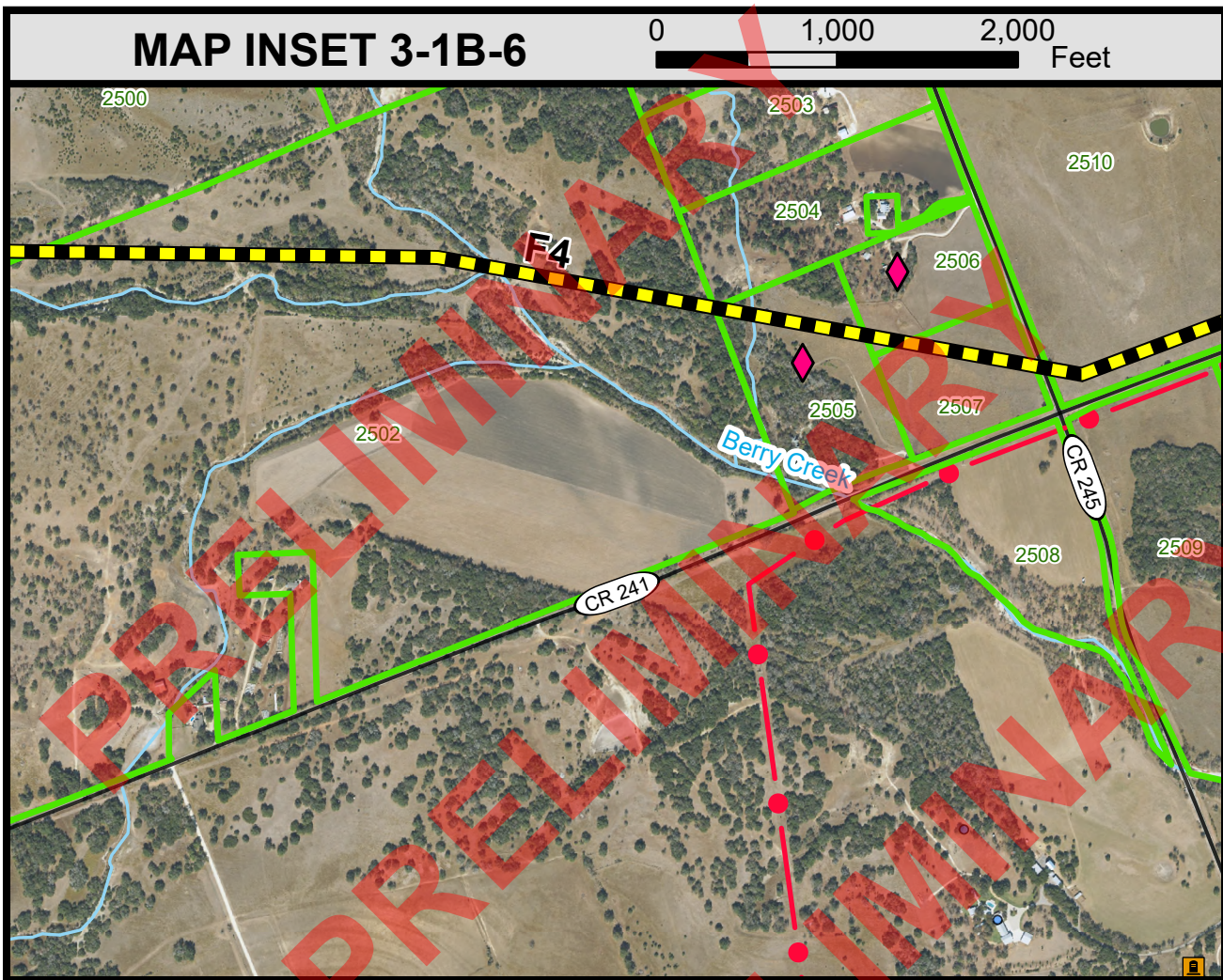
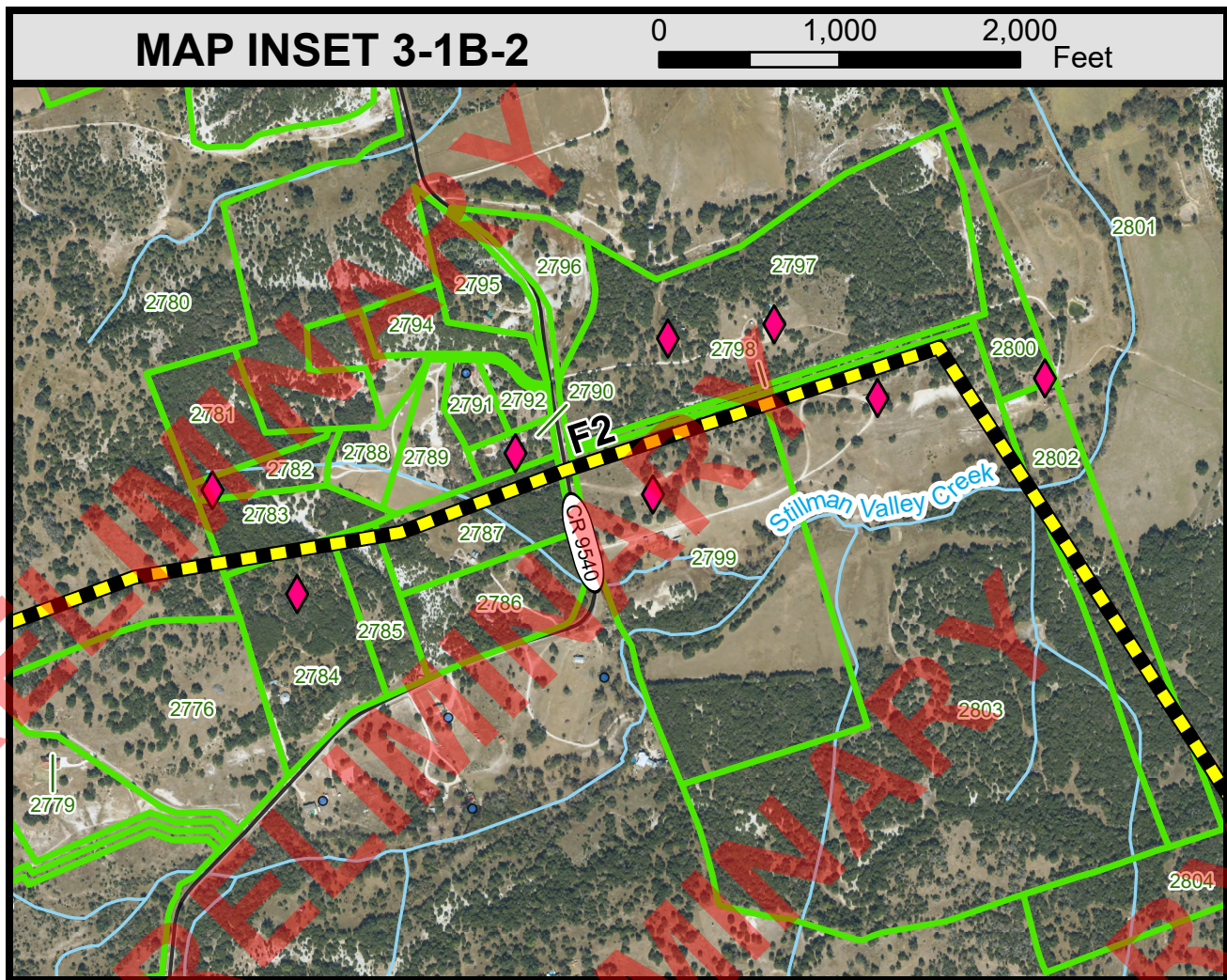
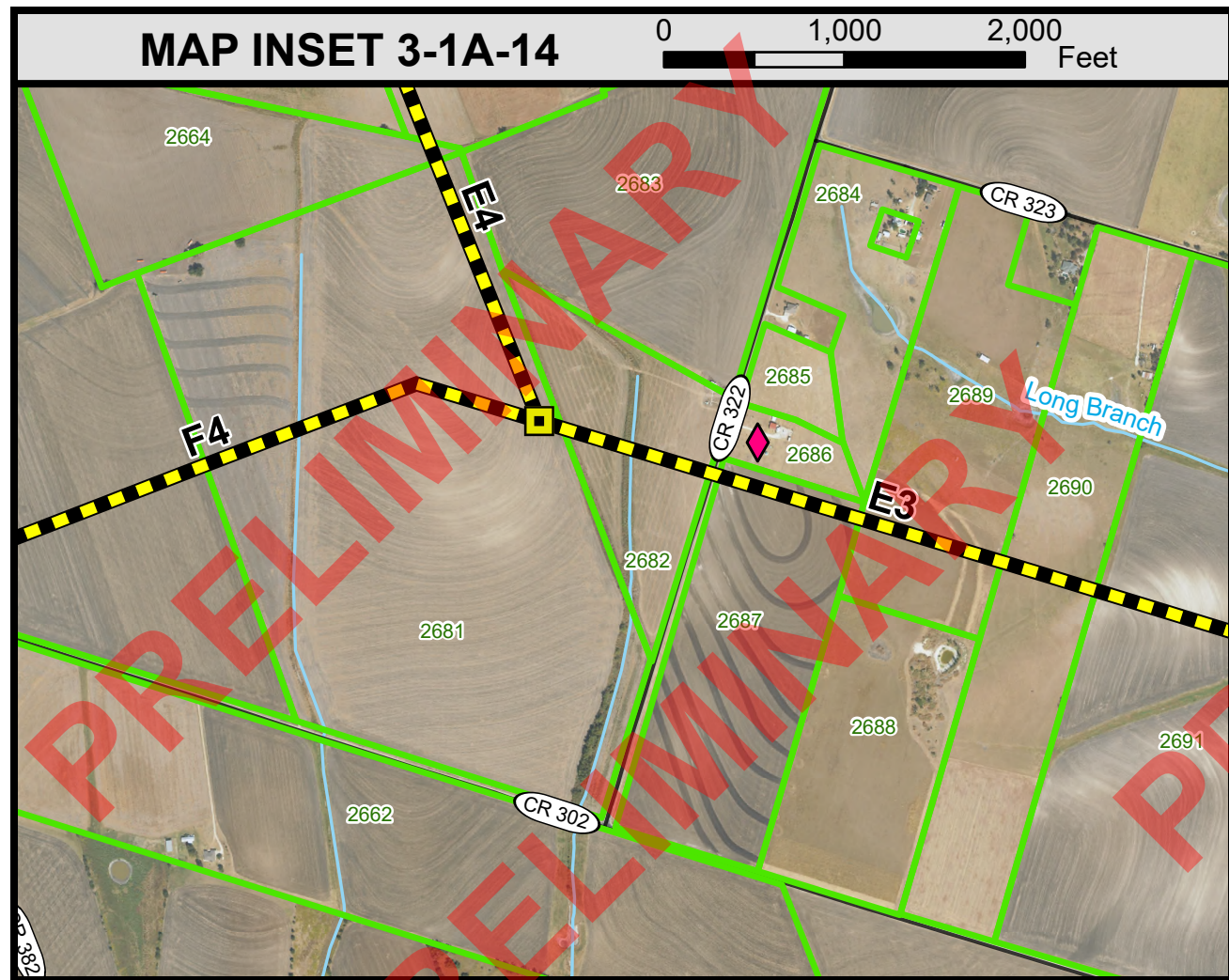
BELL COUNTY EAST - BIG HILL  
765 kV Transmission Line Project  
Map Insets  
Page 1 of 3

- Legend**
- HABITABLE STRUCTURE (WITHIN 500 FEET OF ROUTE)
  - COMMUNICATION TOWER
  - SCHOOL
  - NATIONAL REGISTER OF HISTORIC PLACES SITE
  - HISTORICAL MARKER
  - CEMETERY
  - WIND TURBINE
  - HELICOPTER PAD
  - REGISTERED AIRPORT / AIRSTRIP
  - UNREGISTERED AIRSTRIP
  - RAILROAD COMMISSION WELL DATA
  - TEXAS WATER DEVELOPMENT BOARD WATER WELL DATA
  - TRAVELING IRRIGATION
  - LANDFILL
  - PROJECT ENDPOINT
  - NODE BETWEEN ADJACENT ROUTE LINKS
  - PRELIMINARY ALTERNATIVE ROUTE LINKS
  - EXISTING TRANSMISSION LINE
  - PIPELINE 8" AND GREATER
  - PIPELINE LESS THAN 8"
  - PUBLIC ROAD
  - RAILROAD
  - TRACT NUMBER AND BOUNDARY
  - SOLAR FACILITY
  - PARK / RECREATIONAL AREA
  - COUNTY BOUNDARY
  - MAJOR STREAM
  - WATER BODY
  - CITY LIMIT
  - STUDY AREA BOUNDARY
  - MILITARY AREA

- Notes:
- Some legend symbols are enlarged for easier identification.
  - Sensitive cultural resource data is not shown on this map as this data is not to be reproduced, distributed, or released to the public.
  - Data is for display purposes only. All features and boundaries have been approximated based on information gathered from review of public resources and from field reconnaissance.
  - This map contains county appraisal district data. Property lines shown are approximate and are not verified by field survey. Property data prepared by Integra Realty Resources with route location furnished by Half and Kimley-Horn.
  - Aerial photography is from the most recent publicly available database (ESRI World Imagery 2024).
  - Data Sources: TxDOT, The Railroad Commission of Texas, Federal Aviation Administration, Federal Communications Commission, Texas Water Development Board, Texas Historical Commission, Texas Parks and Wildlife Department, USGS National Hydrology Dataset, US Photovoltaic Database.
  - Due to the potential horizontal inaccuracies of the aerial photography and data utilized, all habitable structures within 520 feet have been identified.
  - Map insets shown correspond to Constraints Map Figures 3-1A to 3-1G.

Date Printed: 6/18/2025





BELL COUNTY EAST - BIG HILL  
765 kV Transmission Line Project  
Map Insets  
Page 2 of 3

Legend

- HABITABLE STRUCTURE (WITHIN 500 FEET OF ROUTE)
- COMMUNICATION TOWER
- SCHOOL
- NATIONAL REGISTER OF HISTORIC PLACES SITE
- HISTORICAL MARKER
- CEMETERY
- WIND TURBINE
- HELICOPTER PAD
- REGISTERED AIRPORT / AIRSTRIP
- UNREGISTERED AIRSTRIP
- RAILROAD COMMISSION WELL DATA
- TEXAS WATER DEVELOPMENT BOARD WATER WELL DATA
- TRAVELING IRRIGATION
- LANDFILL
- PROJECT ENDPOINT
- NODE BETWEEN ADJACENT ROUTE LINKS
- PRELIMINARY ALTERNATIVE ROUTE LINKS
- EXISTING TRANSMISSION LINE
- PIPELINE 8" AND GREATER
- PIPELINE LESS THAN 8"
- PUBLIC ROAD
- RAILROAD
- TRACT NUMBER AND BOUNDARY
- SOLAR FACILITY
- PARK / RECREATIONAL AREA
- COUNTY BOUNDARY
- MAJOR STREAM
- WATER BODY
- CITY LIMIT
- STUDY AREA BOUNDARY
- MILITARY AREA

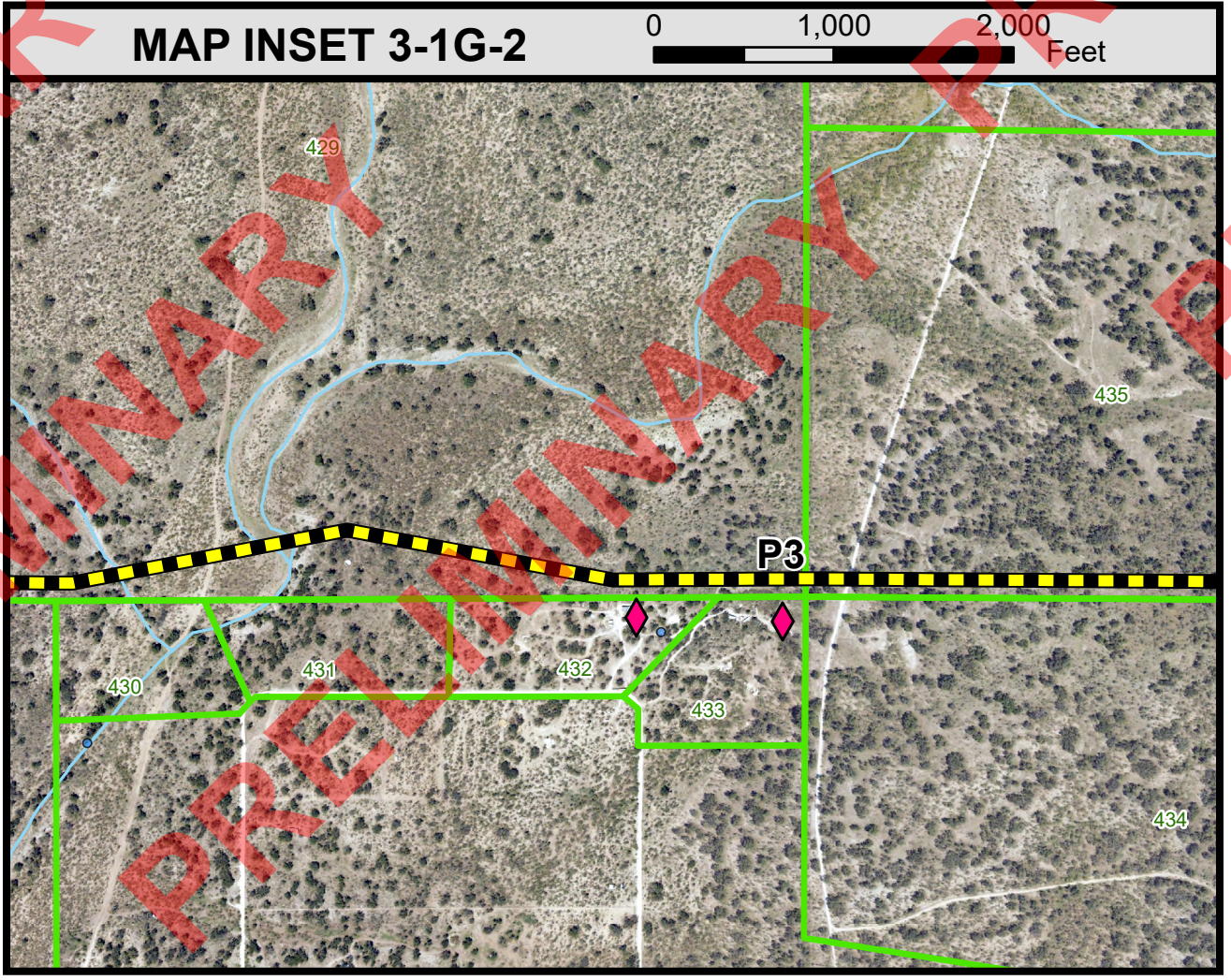
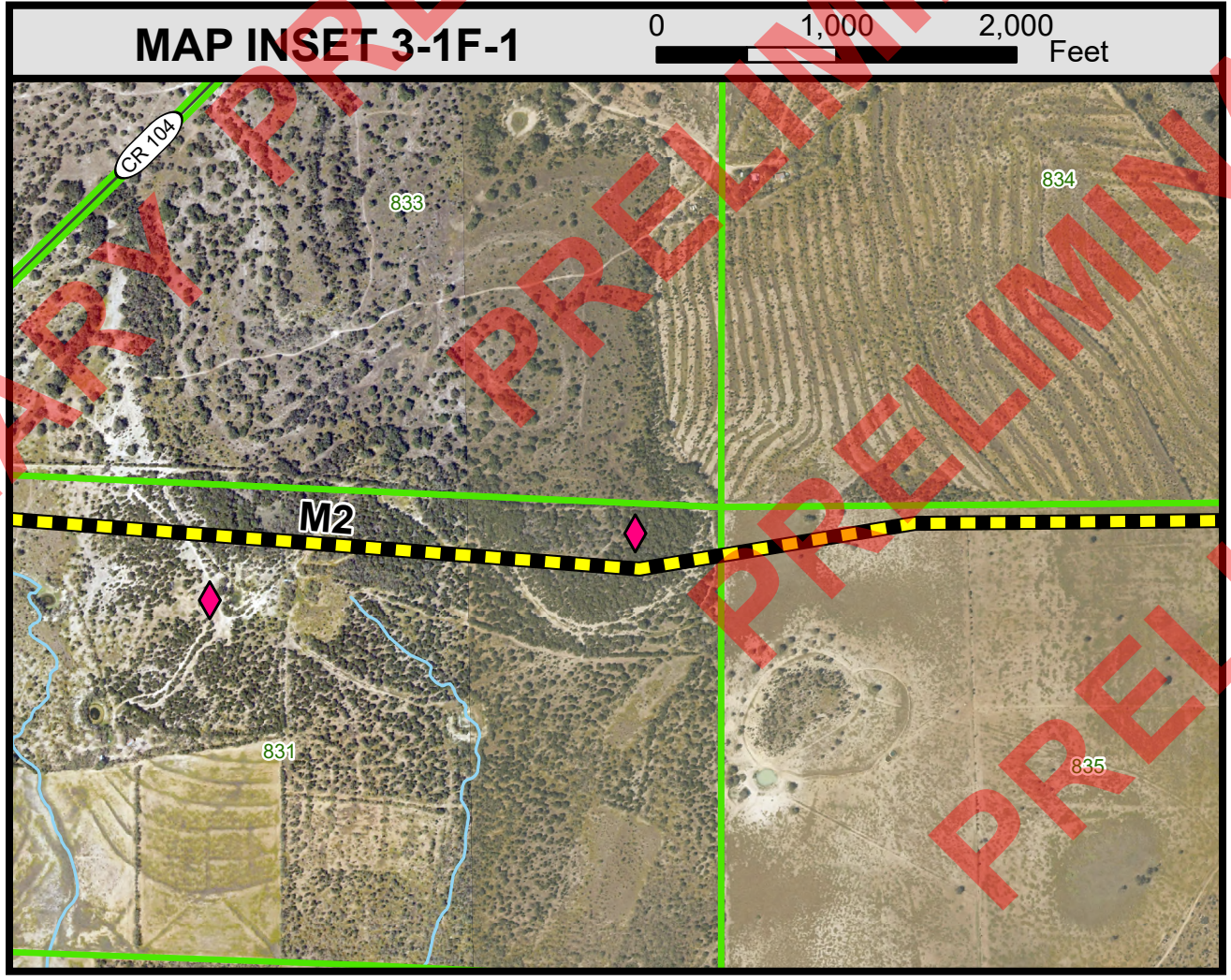
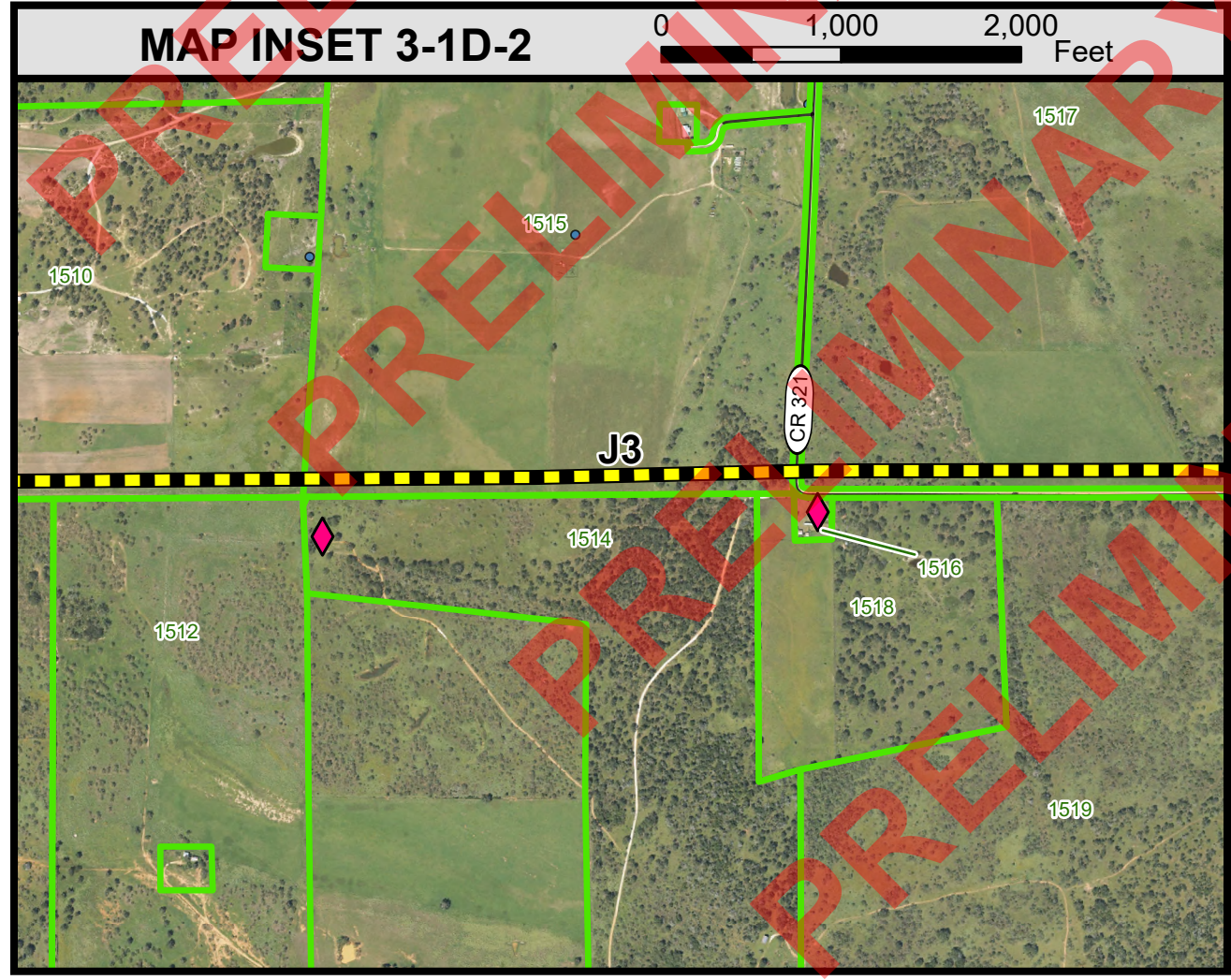
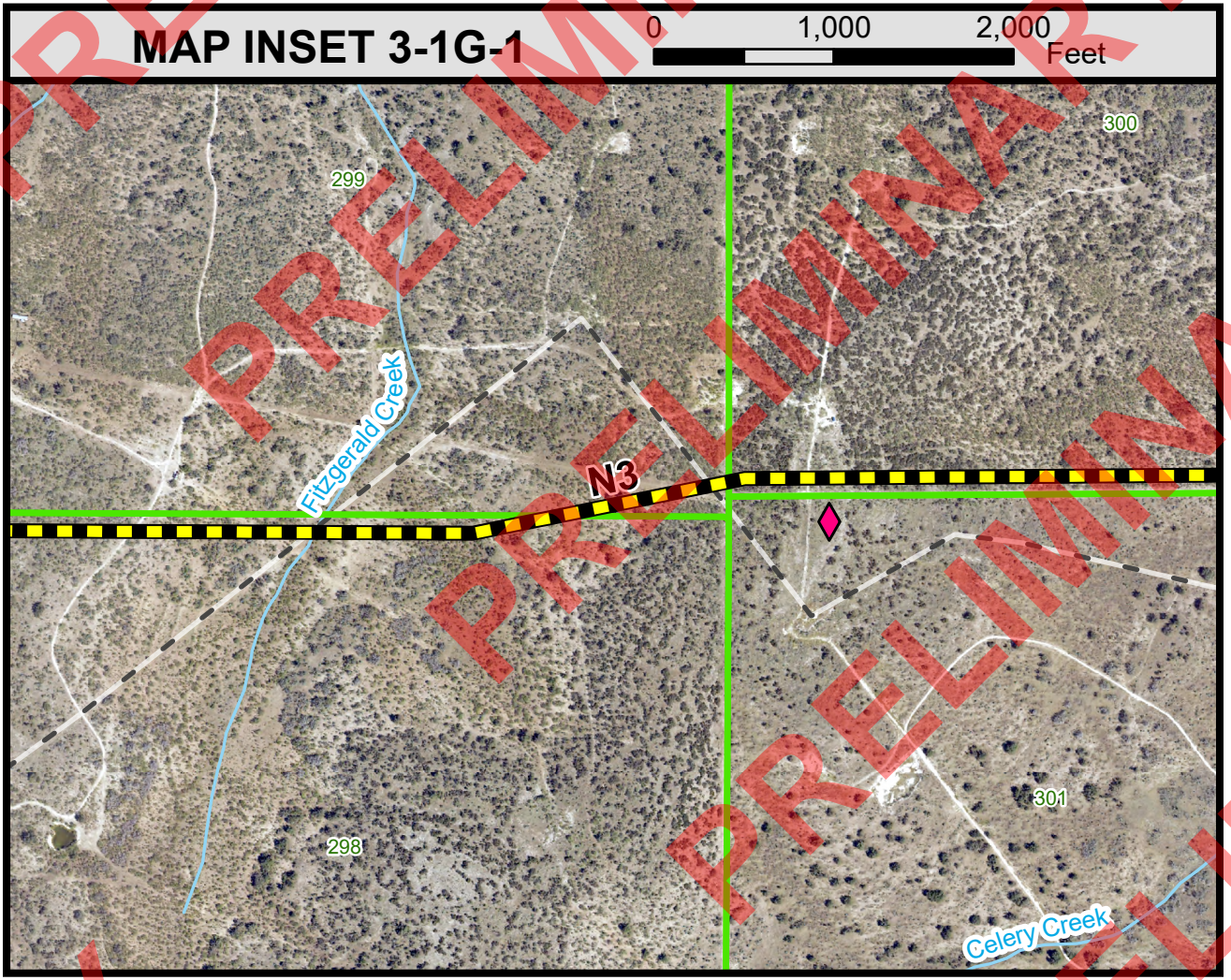
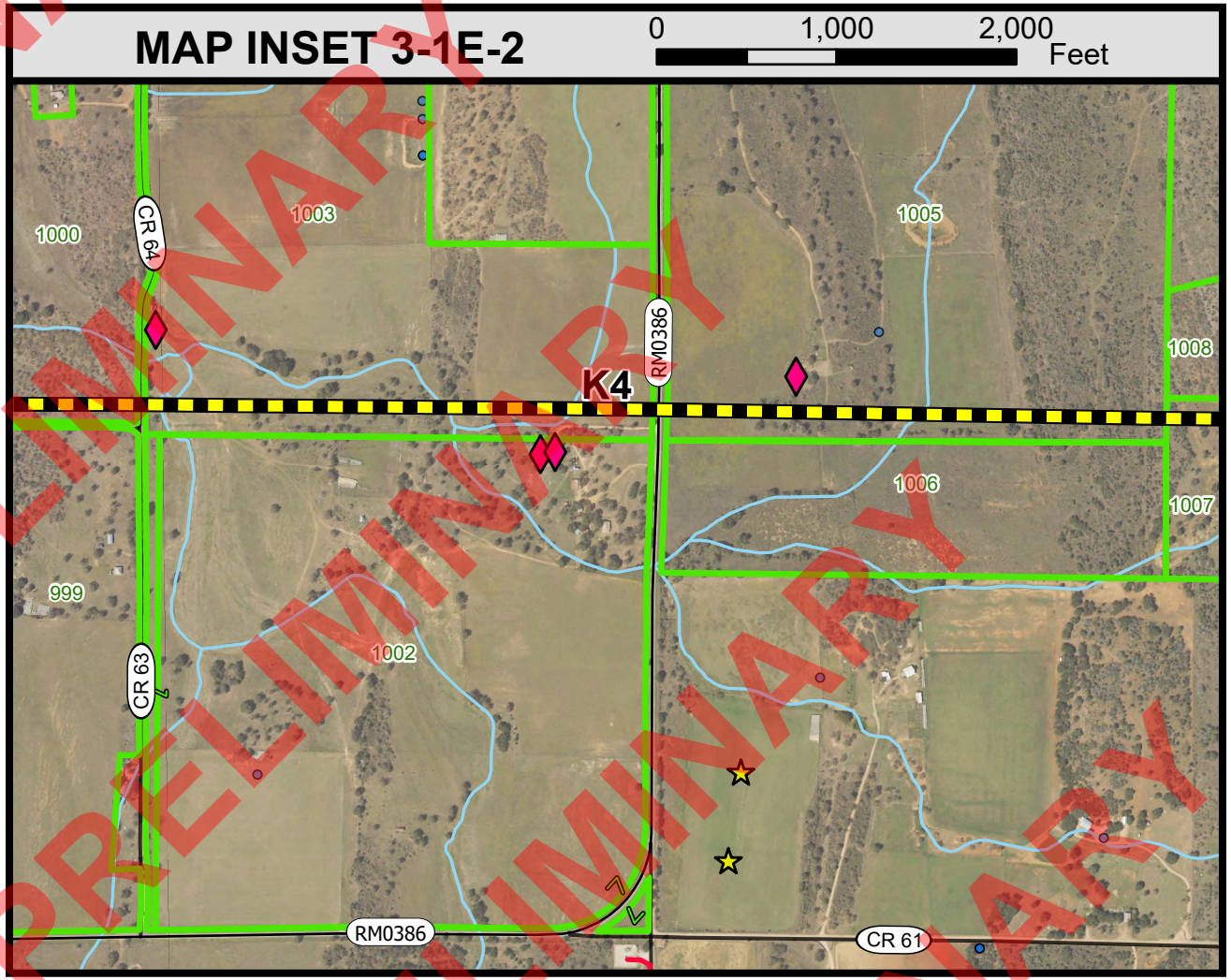
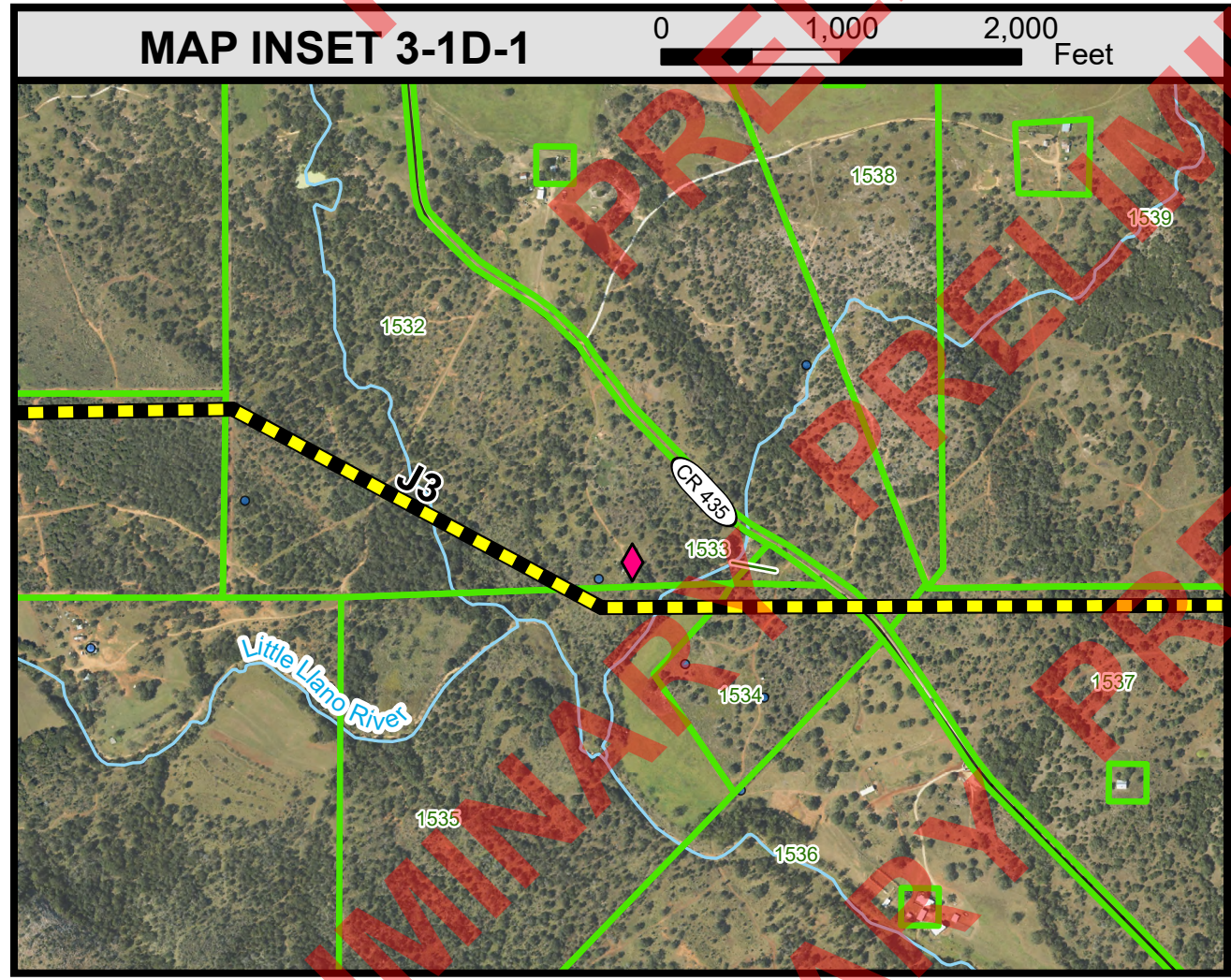
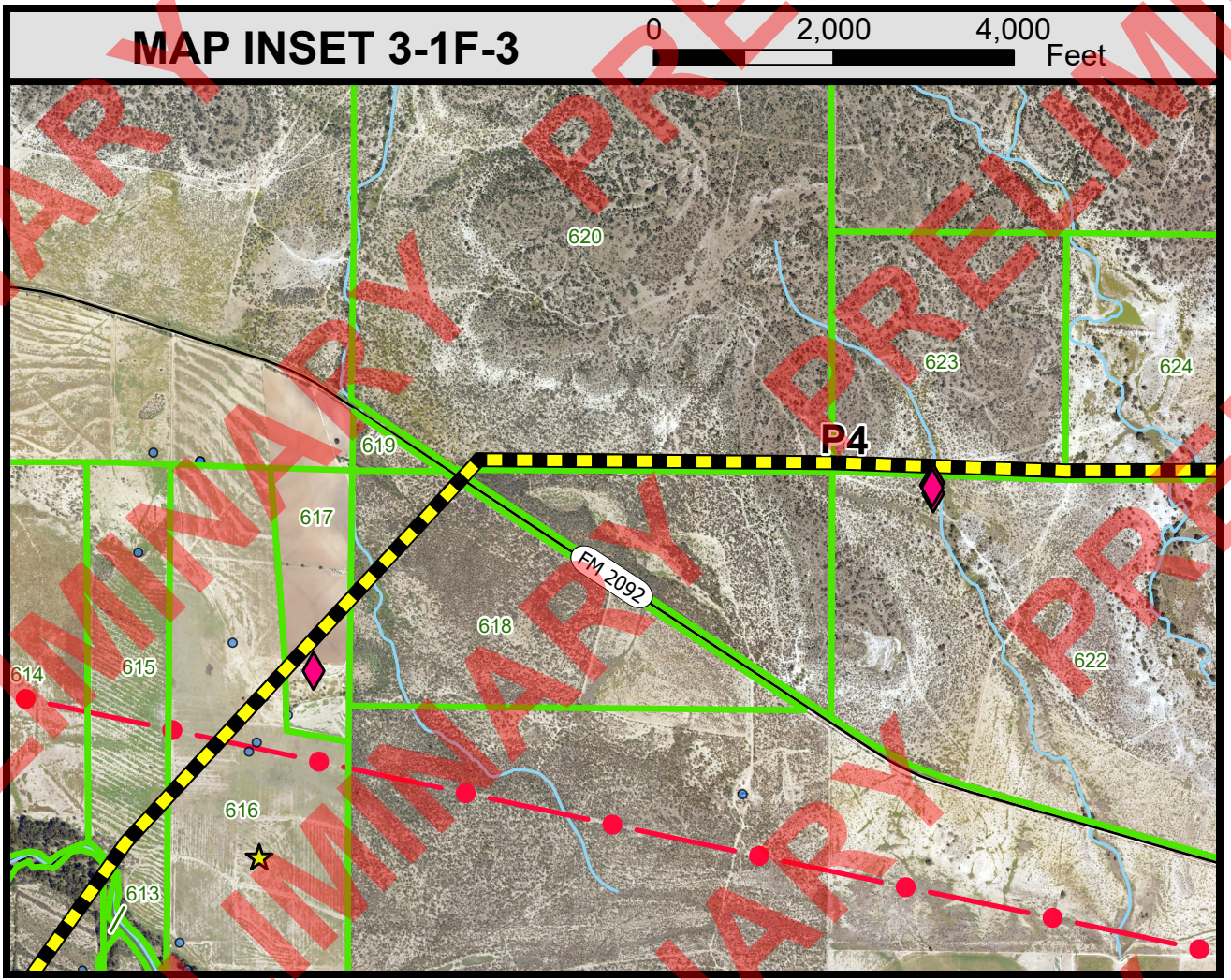
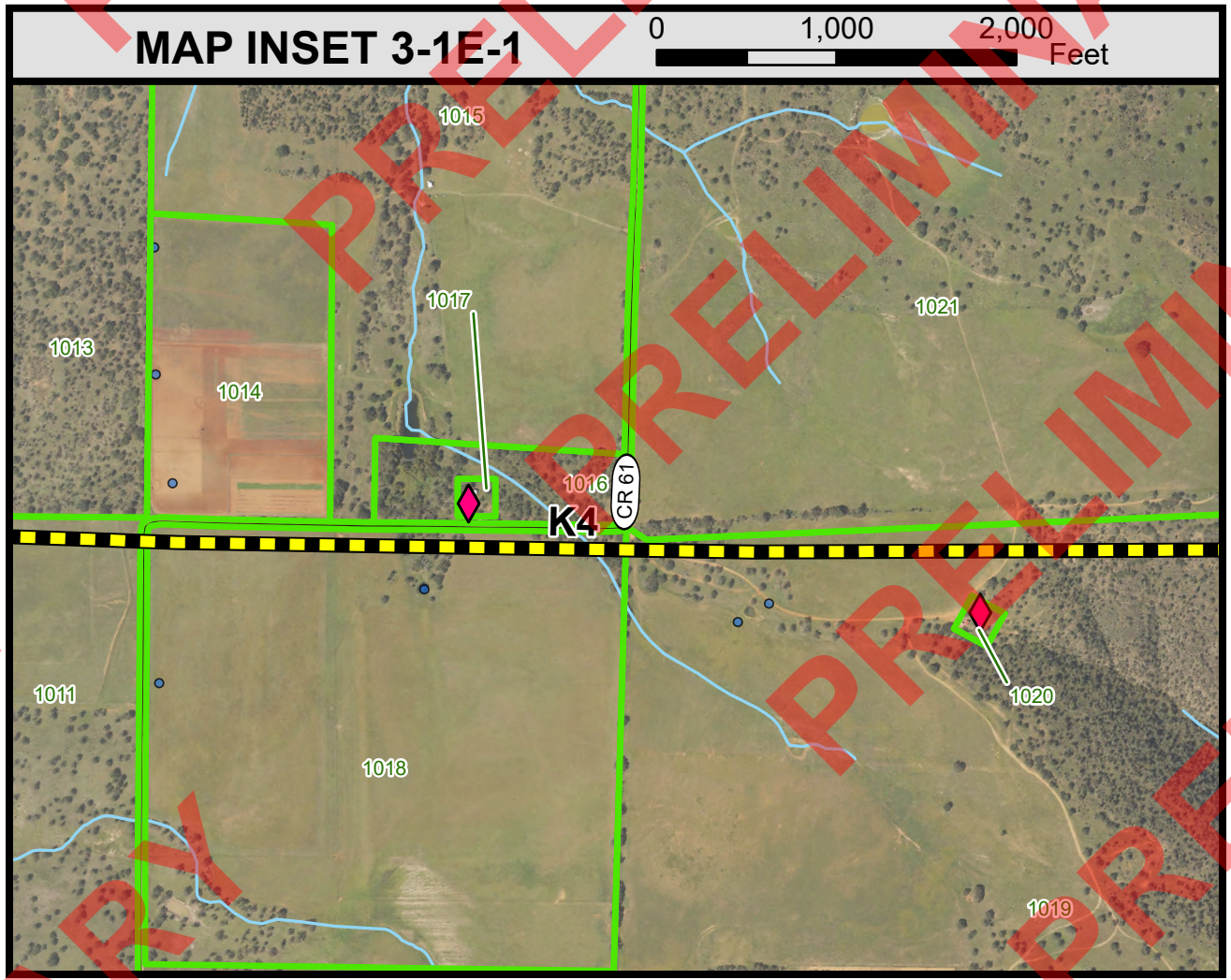
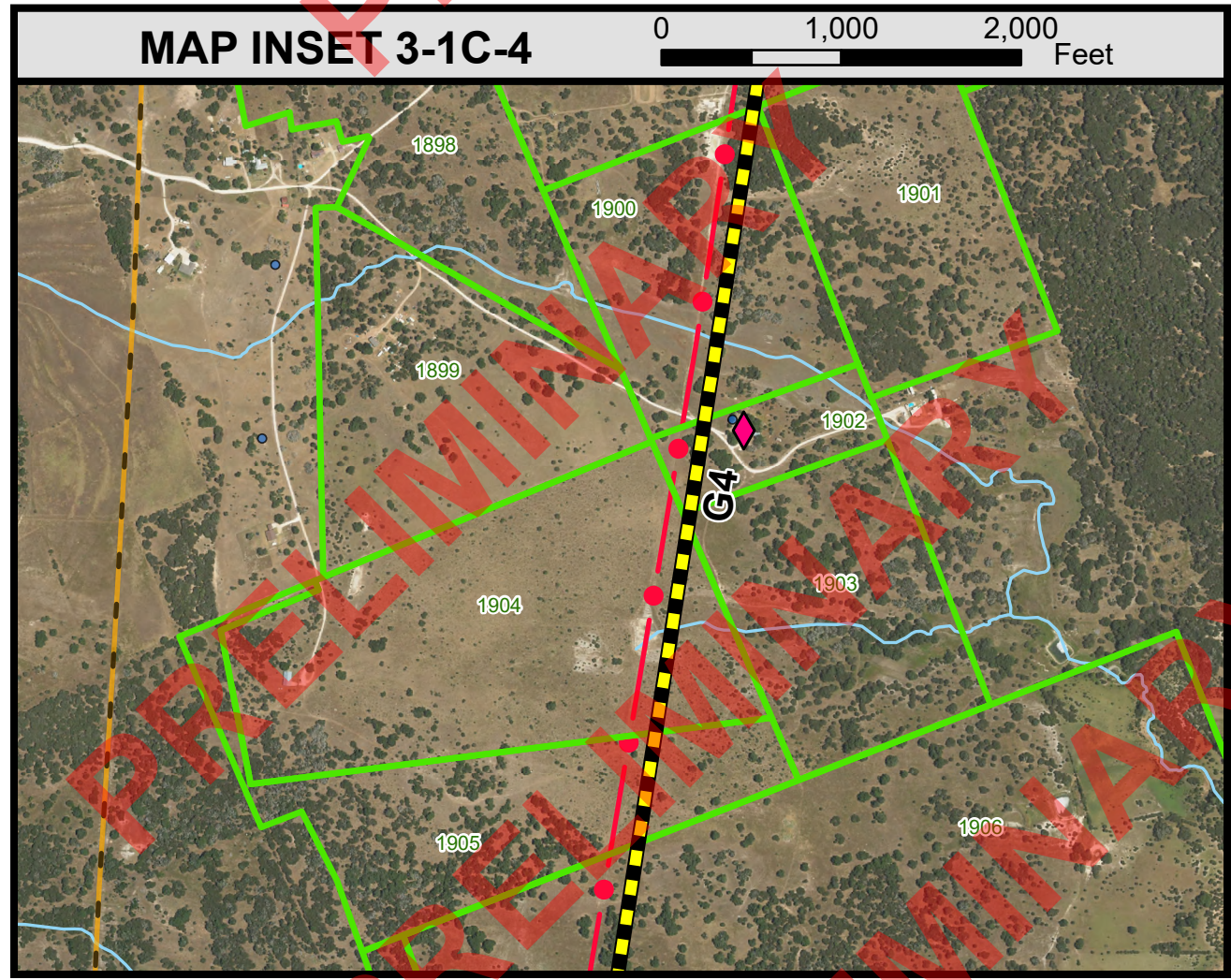
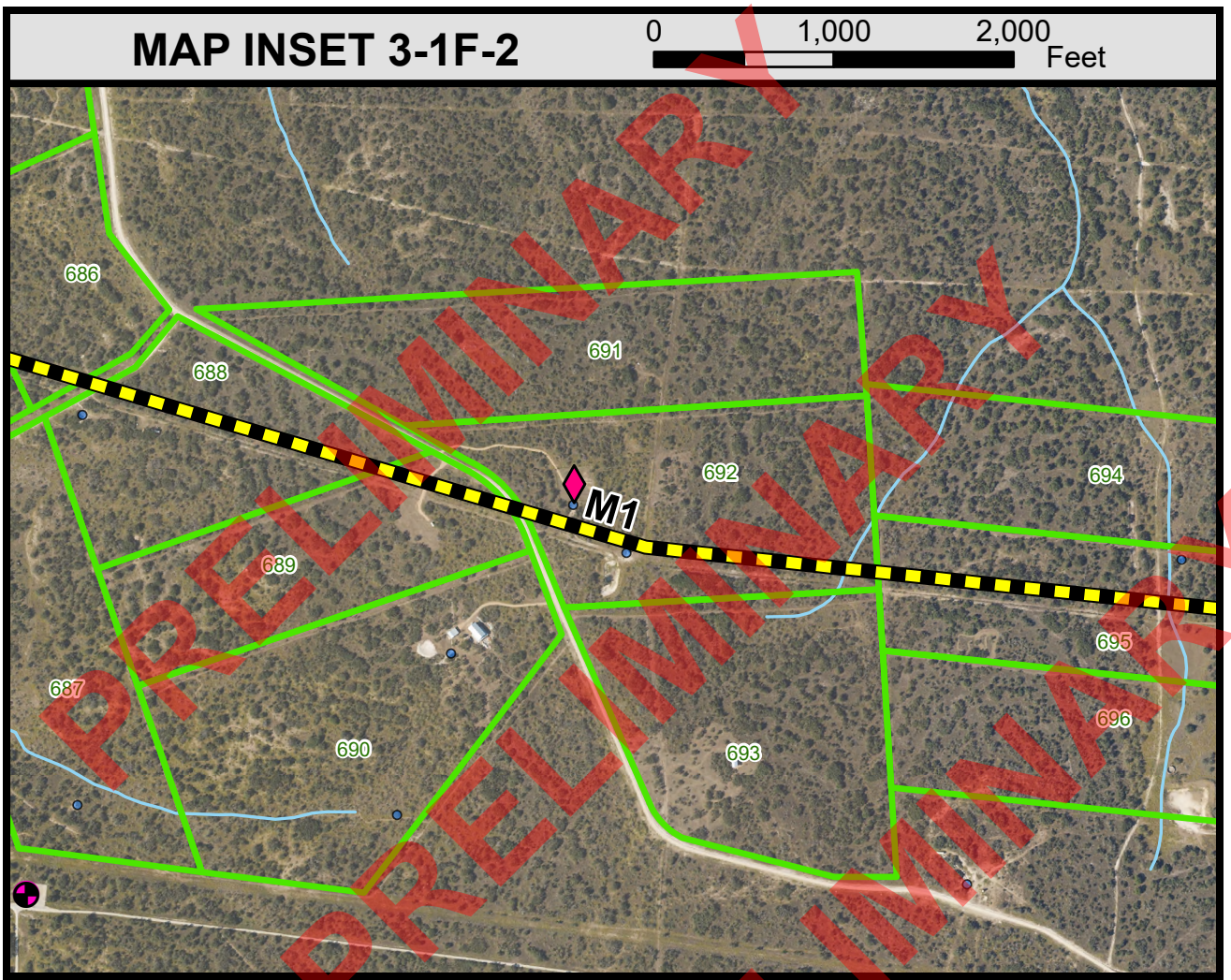
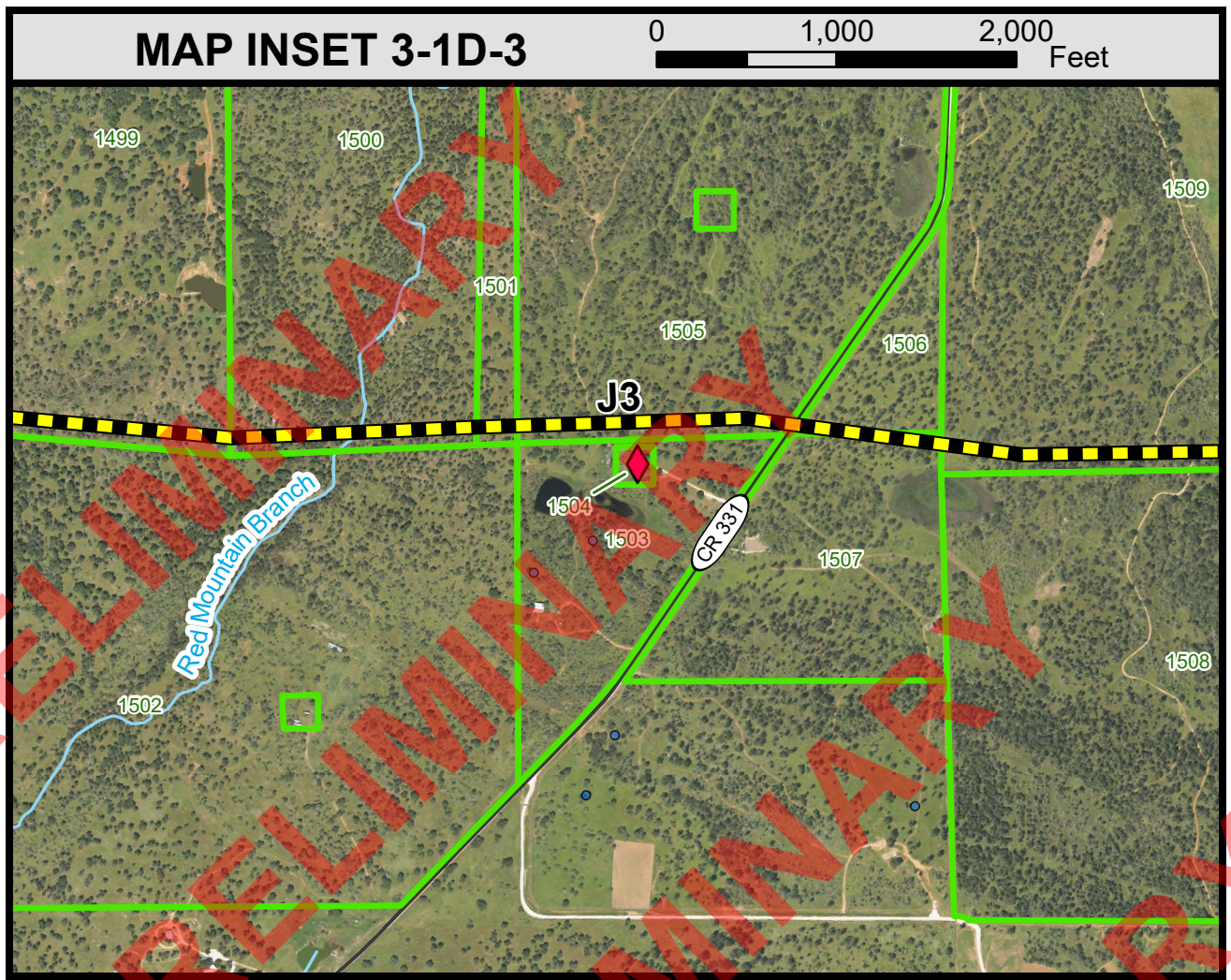
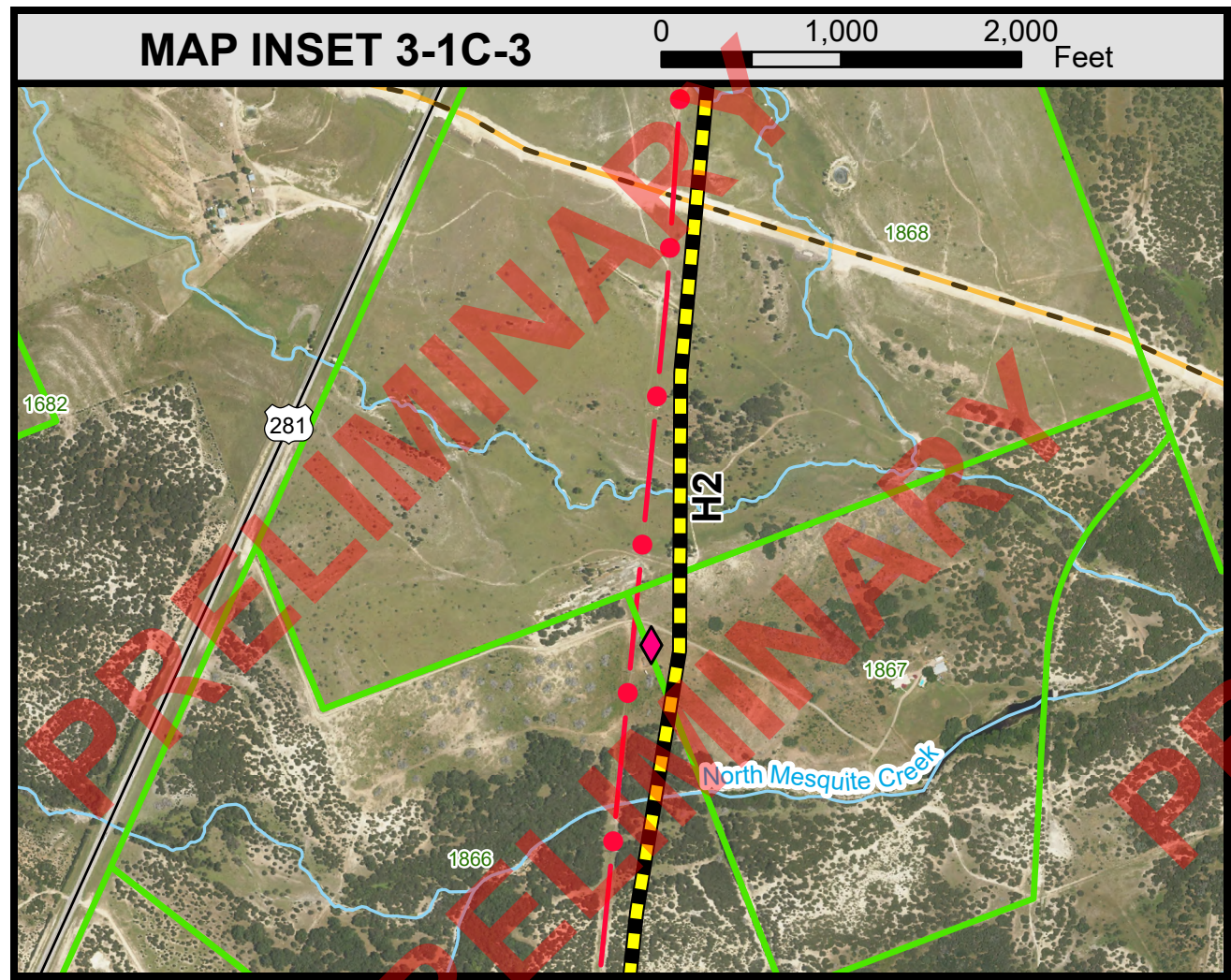


Notes:

- Some legend symbols are enlarged for easier identification.
- Sensitive cultural resource data is not shown on this map as this data is not to be reproduced, distributed, or released to the public.
- Data is for display purposes only. All features and boundaries have been approximated based on information gathered from review of public resources and from field reconnaissance.
- This map contains county appraisal district data. Property lines shown are approximate and are not verified by field survey. Property data prepared by Integra Realty Resources with route location furnished by Half and Kimley-Horn.
- Aerial photography is from the most recent publicly available database (ESRI World Imagery 2024).
- Data Sources: TxDOT, The Railroad Commission of Texas, Federal Aviation Administration, Federal Communications Commission, Texas Water Development Board, Texas Historical Commission, Texas Parks and Wildlife Department, USGS National Hydrology Dataset, US Photovoltaic Database.
- Due to the potential horizontal inaccuracies of the aerial photography and data utilized, all habitable structures within 520 feet have been identified.
- Map insets shown correspond to Constraints Map Figures 3-1A to 3-1G.

Date Printed: 6/18/2025





Remainder of page intentionally left blank

**Legend**

- HABITABLE STRUCTURE (WITHIN 500 FEET OF ROUTE)
- COMMUNICATION TOWER
- SCHOOL
- NATIONAL REGISTER OF HISTORIC PLACES SITE
- HISTORICAL MARKER
- CEMETERY
- WIND TURBINE
- HELICOPTER PAD
- REGISTERED AIRPORT / AIRSTRIP
- UNREGISTERED AIRSTRIP
- RAILROAD COMMISSION WELL DATA
- TEXAS WATER DEVELOPMENT BOARD WATER WELL DATA
- TRAVELING IRRIGATION
- LANDFILL
- PROJECT ENDPOINT
- NODE BETWEEN ADJACENT ROUTE LINKS
- PRELIMINARY ALTERNATIVE ROUTE LINKS
- EXISTING TRANSMISSION LINE
- PIPELINE 8" AND GREATER
- PIPELINE LESS THAN 8"
- PUBLIC ROAD
- RAILROAD
- TRACT NUMBER AND BOUNDARY
- SOLAR FACILITY
- PARK / RECREATIONAL AREA
- COUNTY BOUNDARY
- MAJOR STREAM
- WATER BODY
- CITY LIMIT
- STUDY AREA BOUNDARY
- MILITARY AREA

**Notes:**

- Some legend symbols are enlarged for easier identification.
- Sensitive cultural resource data is not shown on this map as this data is not to be reproduced, distributed, or released to the public.
- Data is for display purposes only. All features and boundaries have been approximated based on information gathered from review of public resources and from field reconnaissance.
- This map contains county appraisal district data. Property lines shown are approximate and are not verified by field survey. Property data prepared by Integra Realty Resources with route location furnished by Half and Kimley-Horn.
- Aerial photography is from the most recent publicly available database (ESRI World Imagery 2024).
- Data Sources: TxDOT, The Railroad Commission of Texas, Federal Aviation Administration, Federal Communications Commission, Texas Water Development Board, Texas Historical Commission, Texas Parks and Wildlife Department, USGS National Hydrology Dataset, US Photovoltaic Database.
- Due to the potential horizontal inaccuracies of the aerial photography and data utilized, all habitable structures within 520 feet have been identified.
- Map insets shown correspond to Constraints Map Figures 3-1A to 3-1G.

Date Printed: 6/18/2025