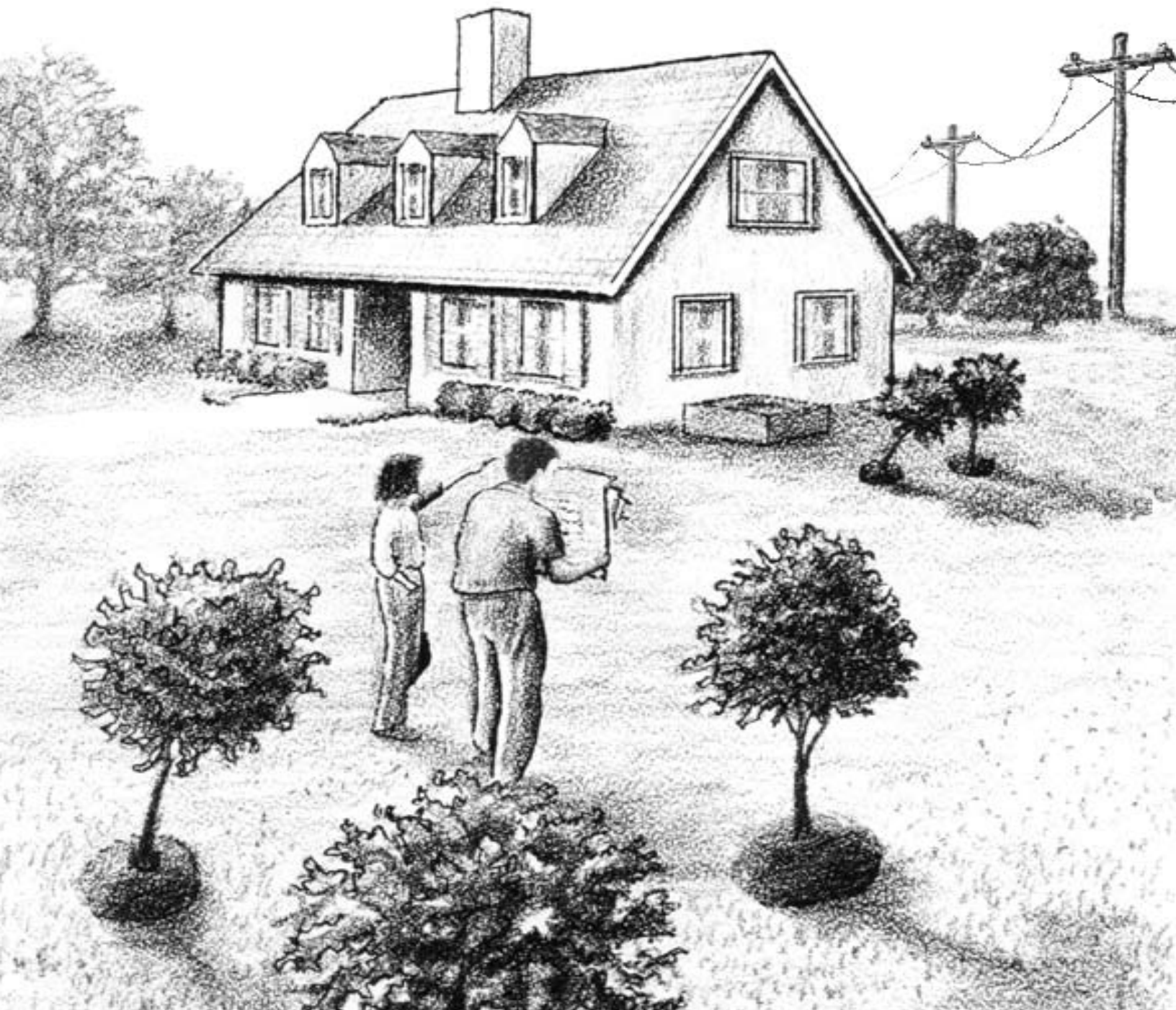




Plan before you plant
by selecting the right tree for the right place



Plan before you plant by selecting the right tree for the right place

When planning your home's landscape, it is important to select the right tree for the right place. Because different trees have different mature heights, plan carefully where you plant each tree.

Good landscaping frames your home, rather than hides it. Planting the right tree in the right place will enhance your property value and prevent costly trimming and damage to your home in the future. Good landscaping also utilizes shrubs and low-growing trees that are compatible with electric utility lines. Low-growing trees will not normally reach electric lines, and therefore will help prevent power interruptions to you and your neighbors.

Trees can be a constant threat to safety if poorly located. For example, if a child climbs a tree with branches touching power lines, tragedy can result. Tree limbs in contact with power lines can act as conductors, and a child can be seriously injured if contact is made.

Trees provide many benefits

Energy Conservation:

Proper placement of trees can reduce home heating and cooling costs by up to 20 percent.

Air Quality:

Trees release oxygen into the air while absorbing carbon dioxide.

Wildlife:

A variety of trees and landscape plants can benefit wildlife by providing food and shelter.

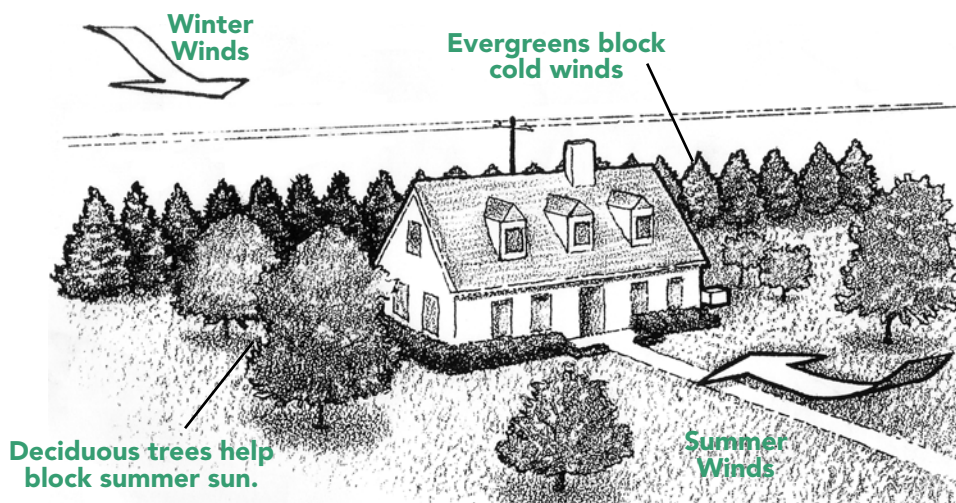
Property Value:

Attractive landscaping can add as much as 15 percent to the value of your property.

Trees contribute to energy conservation

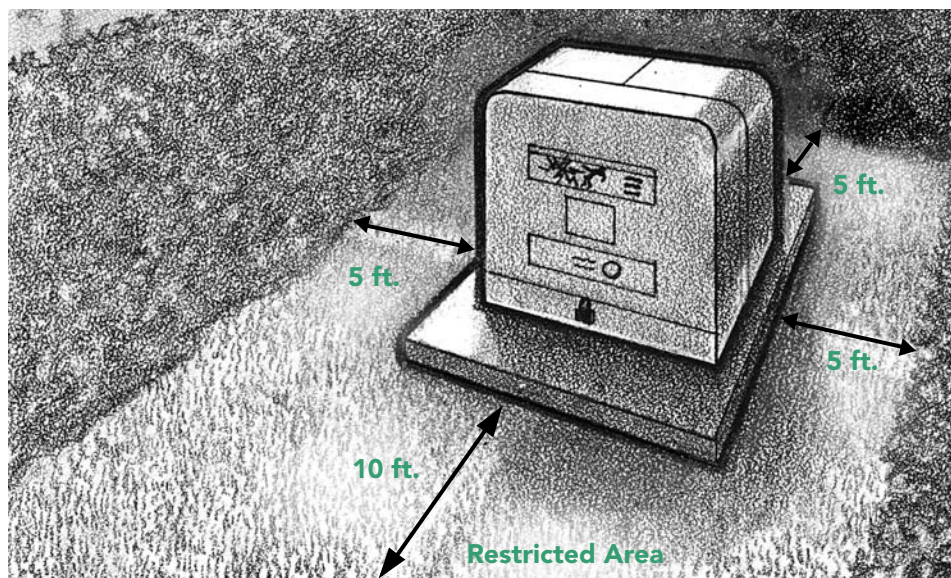
Trees can be used to reduce home energy use. Tall deciduous trees provide cooling shade in summer, yet allow sunlight to warm a home in winter when they lose their leaves. Evergreen trees planted on the windward side of a home help block cold wind and reduce winter heating requirements.

Use small trees, shrubs and vines to provide shade for walls and windows, if there is not enough space for a large tree. Only plant small trees near or under overhead utility lines.



Restricted Area

Avoid planting trees or shrubs around electric transformers. Allow at least 10-feet access in front of transformer and five feet around sides and back as shown.



A planning guide

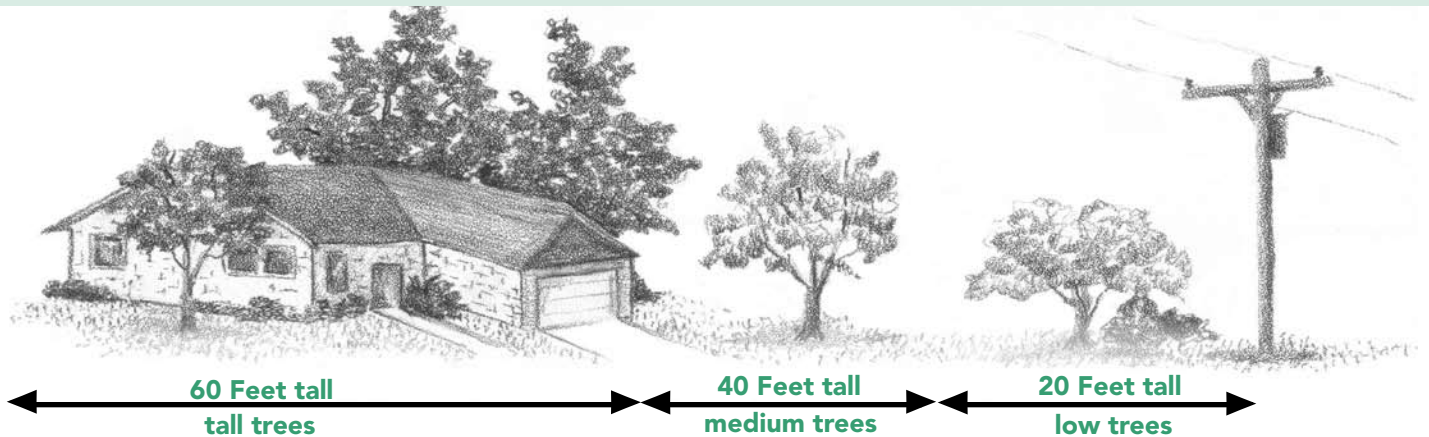
Most species of trees live for many years and should be considered a permanent addition to the landscape. Because trees grow and change, you should carefully plan before planting

to avoid future problems. Careful thought and planning can prevent the need for future trimming around power lines. Before planting trees, you should consider:

- Mature height and width of tree
- Amount of shade provided
- Shape of tree: spread or columnar
- Seed production
- Growth rate and longevity

The Distribution planting zone concept

The distance trees should be planted from overhead power distribution lines is determined by the tree's height at maturity. Trees planted near transmission lines require greater clearance distance.



Lawn

This zone is suitable for those trees that grow over 60 feet. When planting, you should consider your neighbor's view and property. Trees for this zone should be placed at least 35 feet away from the house for proper root development and should never be planted near a power line.

House Lawn

This zone, which includes mostly lawn area, is the main landscape area. Trees in this area should frame the landscape without hiding the house from sight. Trees for this zone may have a mature height of 40 feet. Also, consider the diameter of the tree at maturity.

Power Line

This zone ends 20 feet away from overhead power lines. We suggest you not plant any tree in this zone, but if you must, select a suitable tree from this guide. These selections include those trees that should not require trimming to assure public safety and reliable electric service.

When to plant

Now! The best time to have planted a tree was 50 years ago - the next best time is now. Be sure you look up for power lines. Trees grown in containers can be planted at any time, but October through March is the best time in our service area. This will allow the roots of your new tree to become established before our hot dry summers.

Care of your tree

Monitor your tree for problems such as disease, insects and broken or dead limbs. You will be amazed at how your tree will respond to your care.

Regular watering is important. New trees need about one inch of water per week for about two years when rainfall is low. Be careful not to drown the roots: they need air as well as water to grow.

Do not add fertilizer at planting. Sprinkle a balanced fertilizer (one

that contains nitrogen, phosphorus, potassium and micronutrients) over your planting area the next spring, and then again two times during the growing season. Always follow the fertilizer's label as to the amount to apply; too much will injure the tree. Remember: a good mulch layer will provide a natural source of nutrients to the tree. Maintain a 3-4 inch mulch layer within the planting area. Keep the mulch away from the base of the trunk to avoid potential rotting of the bark. It is not necessary to prune a tree at the time of planting unless it is

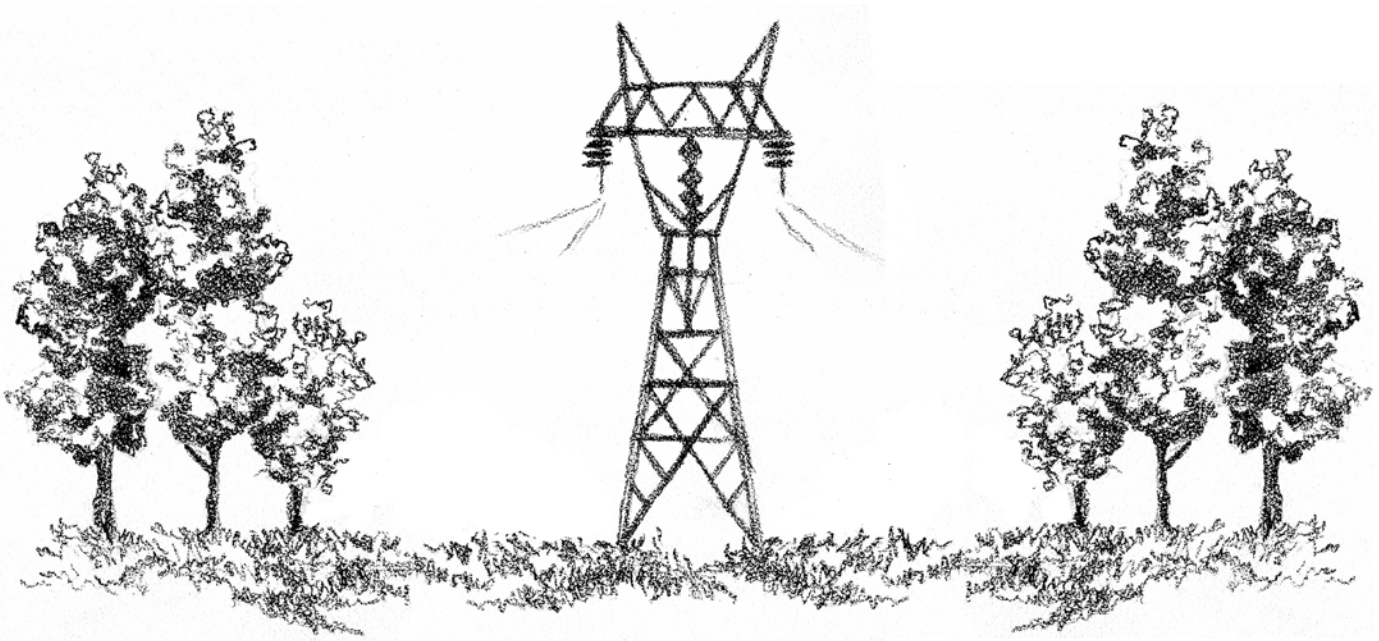
to remove the following:

- Dead branches
- Diseased or damaged branches
- Crossed or rubbing branches
- Narrow crotches
- Multiple main stems (select one main stem)

Tree paint is not recommended on pruning cuts, except to prevent the spread of oak wilt infection.

With proper care, your tree investment will pay off many times over. Call a qualified arborist if you have any questions on tree care.

Transmission Rights of Way...



Outside edge of Right of Way

Transmission Rights of Way (ROW) facilities have different clearance requirements than distribution facilities. Maintaining vegetation on transmission facilities should be designed to establish grass or pasture land with no trees or shrubs on the ROW. This allows for utility personnel to access their facilities, to be able to work on them and repair or restore service through the line. This also helps eliminate the possibility of tree-related interference or outage. The distance of clearance required is determined by the voltage of the power line and the

ROW easement document pertaining to a specific property. Unlike distribution facilities that carry electricity to your neighborhood, transmission facilities carry enough electricity to serve large geographic areas and transport electricity to other regions of the state. The effect of an outage on a transmission line would be widespread and have greater impact due to the number of customers involved.

When planting taller trees, take into consideration the mature height of the tree; a tree that will grow to 60 feet should be planted at least 60 feet from the outside edge of

Outside edge of Right of Way

the transmission ROW. By properly maintaining the ROW, we are able to create viable ecosystems that promote the development of wildlife and bird habitats. Oncor Electric Delivery works very closely with environmental and regulatory agencies and land owners to develop and maintain existing habitats correctly, so as not to interfere with the transmission of electricity through our lines.

The maintenance program of each transmission ROW is developed to provide safe, reliable electricity to our customers and the surrounding areas.

Compatible trees around power lines

Flowering dogwood
Cornus florida



Vitex
Vitex angus-castus



Dwarf Crepe myrtle *
Lagerstroemia indica var.



Japanese maple
Acer palmatum var.



Mexican plum
Prunus mexicana



* May grow too large in East Texas to be planted near power lines.

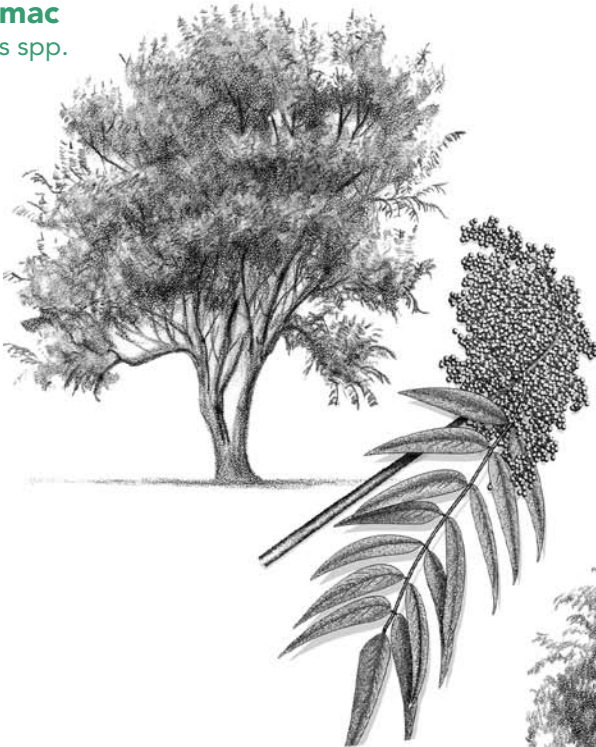
Additional trees and shrubs to consider when landscaping your home:

American Smoke Tree	Carolina Buckthorn	Fringetree	Loquat	Rough-leaf Dogwood
Arborvitae	Crabapple	Hawthorne	Oleander	Texas Buckeye
Burford Holly	Elderberry	Hoptree	Red Tip Photinia*	Wax Ligustrum
Callery Pear	Fig	Japanese Yew	Red Buckeye	Yellow Buckeye

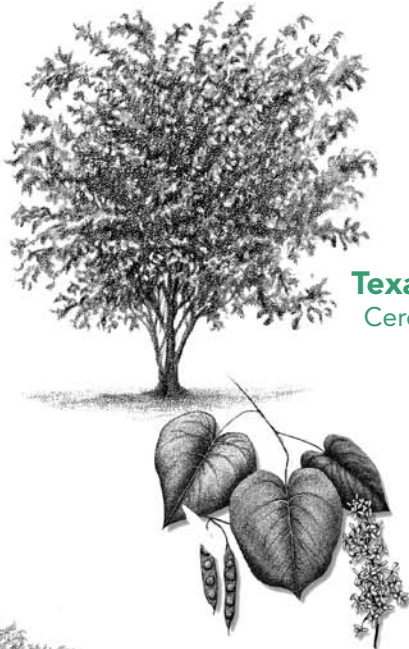
* May grow too large in East Texas to be planted near power lines.

Compatible trees around power lines (continued)

Sumac
Rhus spp.



Texas Redbud *
Cercis canadensis



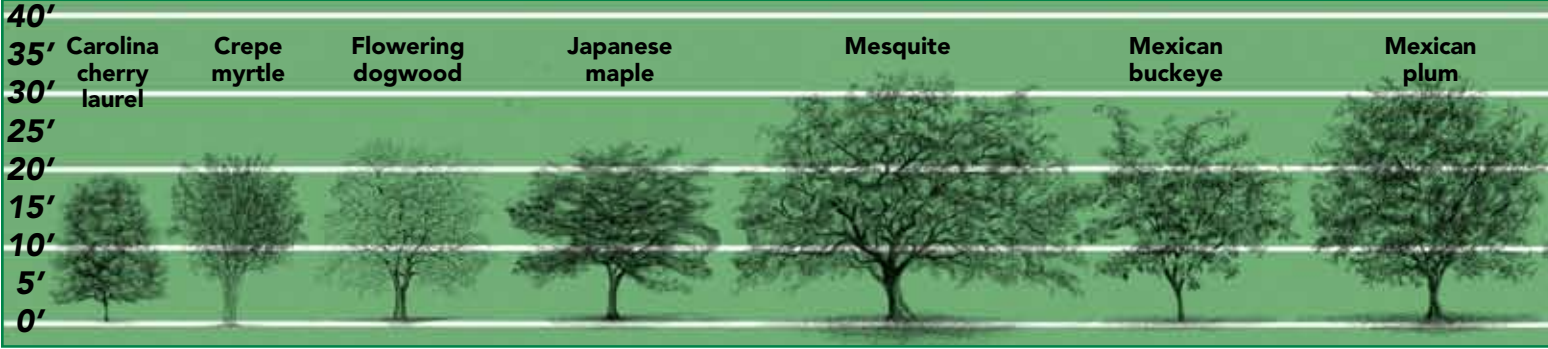
Texas mountain laurel
Sophora secundiflora



Possumhaw
Ilex decidua



Yaupon holly
Ilex vomitoria



Planting a tree

After selecting the right tree for the right place, the next step is to plant the tree properly. Dig the hole two to three times as wide and only as deep as the root ball. Root flairs should always be slightly exposed on final planting. Many container trees are too deep in the pot; you will need to clear dirt away from the top.

With proper tree selection, care and common sense, you can enhance your home and improve the environment in your neighborhood and city.

For more information about trees and their growth characteristics contact:
The Texas Cooperative Extension Service
The International Society of Arboriculture
The Texas Forest Service
Your Local Garden Center
Reference web sites:
<http://www.trees-isa.org>
<http://txforests-service.tamu.edu/>
www.oncor.com
<http://www.tvma.net>

If electric service is delivered to your home underground, know the location of the electric line before digging.

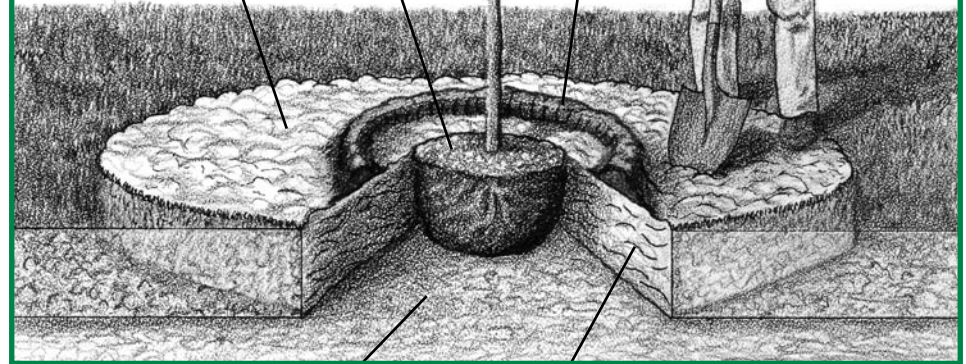
**Call DIG TESS
(1-800-DIG TESS).**

Loosened area of soil two to five times wider than diameter of the root ball.

Top of root ball at grade level

Create small dam 3 feet in diameter

Mulch entire surface loosened area



Solid undisturbed soil

Do not over compact the soil – only enough to hold the tree upright.



Oncor Electric Delivery
115 West 7th
Fort Worth, Texas 76102
www.oncor.com

Vegetation Management

♻️ Printed on Alternative Fibers
50% sugar cane bagasse pulp
50% recycled fiber, including
30% post consumer fiber
No new trees
Manufactured chlorine free

Tree Illustrations © 2000 Robert O'Brien
Form # 8172 Rev. 2/2008